

## Product datasheet for **AP52175PU-N**

### IGSF1 (C-term) Rabbit Polyclonal Antibody

#### Product data:

Product Type:	Primary Antibodies
Applications:	IHC, WB
Recommended Dilution:	<b>ELISA:</b> 1/1000. <b>Western blot:</b> 1/100 - 1/500. <b>Immunohistochemistry on paraffin sections:</b> 1/50 - 1/100.
Reactivity:	Human, Mouse
Host:	Rabbit
Isotype:	Ig
Clonality:	Polyclonal
Immunogen:	KLH conjugated synthetic peptide between 1273-1301 amino acids from the C-terminal region of human IGSF1
Specificity:	This antibody reacts to IGSF1.
Formulation:	PBS State: Aff - Purified State: Liquid purified Ig fraction Preservative: 0.09% (W/V) sodium azide
Concentration:	lot specific
Purification:	Affinity chromatography on Protein A
Conjugation:	Unconjugated
Storage:	Store the antibody undiluted at 2-8°C for one month or (in aliquots) at -20°C for longer. Avoid repeated freezing and thawing.
Stability:	Shelf life: one year from despatch.
Predicted Protein Size:	148936 Da
Gene Name:	immunoglobulin superfamily member 1
Database Link:	<a href="#">Entrez Gene 209268 Mouse</a> <a href="#">Entrez Gene 3547 Human</a> <a href="#">Q8N6C5</a>



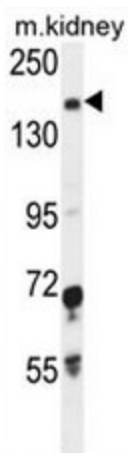
[View online »](#)

**Background:** This gene encodes a member of the immunoglobulin-like domain-containing superfamily. Proteins in this superfamily contain varying numbers of immunoglobulin-like domains and are thought to participate in the regulation of interactions between cells. Multiple transcript variants encoding different isoforms have been found for this gene.

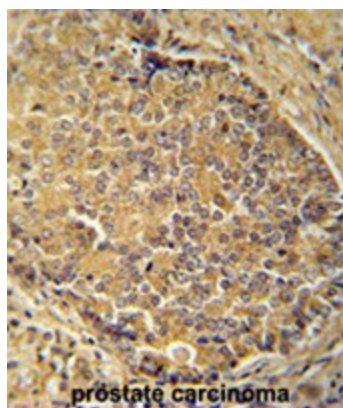
**Synonyms:** Inhibin-binding protein, Pituitary gland specific factor 2, p120, IGDC1, KIAA0364

**Protein Families:** Transmembrane

**Product images:**



IGSF1 Antibody (C-term) western blot analysis in mouse kidney tissue lysates (35ug/lane). This demonstrates the IGSF1 antibody detected the IGSF1 protein (arrow).



IGSF1 antibody (C-term) immunohistochemistry analysis in formalin fixed and paraffin embedded human prostate carcinoma followed by peroxidase conjugation of the secondary antibody and DAB staining. This data demonstrates the use of the IGSF1 antibody (C-term) for immunohistochemistry. Clinical relevance has not been evaluated.