

Product datasheet for **AP52172PU-N**

IGKV A18 (C-term) Rabbit Polyclonal Antibody

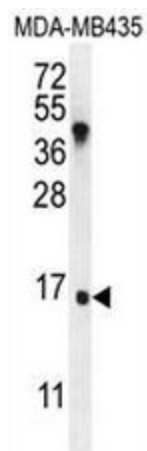
Product data:

Product Type:	Primary Antibodies
Applications:	FC, WB
Recommended Dilution:	ELISA: 1/1000. Western blot: 1/100 –1/500. Flow Cytometry: 1/10 – 1/50.
Reactivity:	Human
Host:	Rabbit
Isotype:	Ig
Clonality:	Polyclonal
Immunogen:	KLH conjugated synthetic peptide between 77-107 amino acids from the C-terminal region of human IGKV A18
Specificity:	This antibody reacts to IGKVA18.
Formulation:	PBS State: Aff – Purified State: Liquid purified Ig fraction Preservative: 0,09% sodium azide
Concentration:	lot specific
Purification:	Affinity chromatography on Protein A
Conjugation:	Unconjugated
Storage:	Store the antibody undiluted at 2-8°C for one month or (in aliquots) at -20°C for longer. Avoid repeated freezing and thawing.
Stability:	Shelf life: one year from despatch.
Predicted Protein Size:	13;182 Da

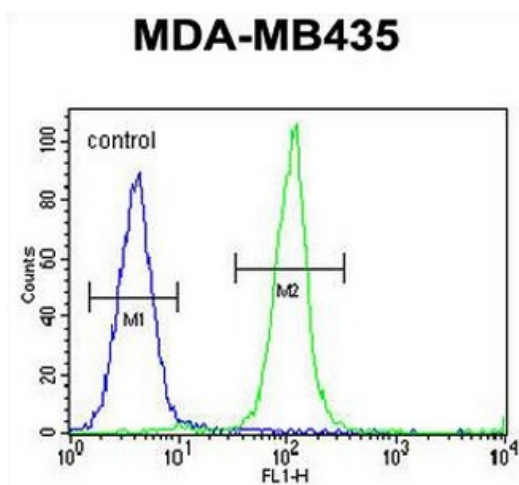


Database Link: [A2NJV5](#)

Product images:



IGKV A18 Antibody (C-term) (Cat. #AP52172PU-N) western blot analysis in MDA-MB435 cell line lysates (35g/lane). This demonstrates the IGKVA18 antibody detected the IGKVA18 protein (arrow).



IGKV A18 Antibody (C-term) (Cat. #AP52172PU-N) flow cytometric analysis of MDA-MB435 cells (right histogram) compared to a negative control cell (left histogram). FITC-conjugated goat-anti-rabbit secondary antibodies were used for the analysis.