

Product datasheet for **AP52171PU-N**

IGHG4 (Center) Rabbit Polyclonal Antibody

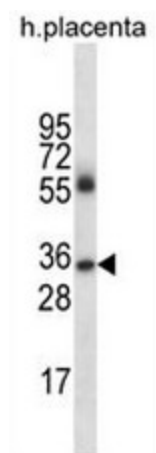
Product data:

Product Type:	Primary Antibodies
Applications:	WB
Recommended Dilution:	ELISA: 1/1000. Western Blot: 1/100 - 1/500.
Reactivity:	Human
Host:	Rabbit
Isotype:	Ig
Clonality:	Polyclonal
Specificity:	This antibody reacts to IGHG4.
Formulation:	PBS State: Aff - Purified State: Liquid purified Ig fraction Preservative: 0.09% (W/V) sodium azide
Concentration:	lot specific
Purification:	Affinity chromatography on Protein A
Conjugation:	Unconjugated
Storage:	Store the antibody undiluted at 2-8°C for one month or (in aliquots) at -20°C for longer. Avoid repeated freezing and thawing.
Stability:	Shelf life: one year from despatch.
Predicted Protein Size:	35941 Da
Gene Name:	immunoglobulin heavy constant gamma 4 (G4m marker)
Database Link:	Entrez Gene 3503 Human P01861
Synonyms:	Ig gamma-4 chain C region



[View online »](#)

Product images:



IGHG4 Antibody (Center) (Cat. #AP52171PU-N) western blot analysis in human placenta tissue lysates (35g/lane). This demonstrates the IGHG4 antibody detected the IGHG4 protein (arrow)