

Product datasheet for **AP52169PU-N**

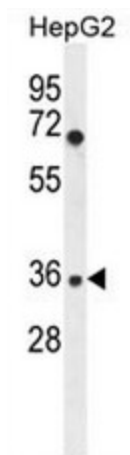
IGHG1 (Center) Rabbit Polyclonal Antibody

Product data:

Product Type:	Primary Antibodies
Applications:	WB
Recommended Dilution:	ELISA: 1/1000. Western Blot: 1/100 - 1/500.
Reactivity:	Human
Host:	Rabbit
Isotype:	Ig
Clonality:	Polyclonal
Immunogen:	KLH conjugated synthetic peptide between 74-102 amino acids from the Central region of human IGHG1
Specificity:	This antibody reacts to IGHG1.
Formulation:	PBS State: Aff - Purified State: Liquid purified Ig fraction Preservative: 0.09% (W/V) sodium azide
Concentration:	lot specific
Purification:	Affinity chromatography on Protein A
Conjugation:	Unconjugated
Storage:	Store the antibody undiluted at 2-8°C for one month or (in aliquots) at -20°C for longer. Avoid repeated freezing and thawing.
Stability:	Shelf life: one year from despatch.
Predicted Protein Size:	36106 Da
Gene Name:	immunoglobulin heavy constant gamma 1 (G1m marker)
Database Link:	Entrez Gene 3500 Human P01857
Synonyms:	Ig gamma-1 chain C region



[View online »](#)

Product images:

IGHG1 Antibody (Center) western blot analysis in HepG2 cell line lysates (35ug/lane). This demonstrates the IGHG1 antibody detected the IGHG1 protein (arrow).