

Product datasheet for **AP52168PU-N**

IGHG1 (Center) Rabbit Polyclonal Antibody

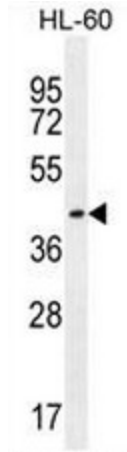
Product data:

Product Type:	Primary Antibodies
Applications:	FC, WB
Recommended Dilution:	ELISA: 1/1000. Western Blot: 1/100 - 1/500. Flow Cytometry: 1/10 - 1/50.
Reactivity:	Human
Host:	Rabbit
Isotype:	Ig
Clonality:	Polyclonal
Immunogen:	KLH conjugated synthetic peptide between 154-180 amino acids from the Central region of human IGHG1
Specificity:	This antibody reacts to IGHG1.
Formulation:	PBS State: Aff - Purified State: Liquid purified Ig fraction Preservative: 0.09% (W/V) sodium azide
Concentration:	lot specific
Purification:	Affinity chromatography on Protein A
Conjugation:	Unconjugated
Storage:	Store the antibody undiluted at 2-8°C for one month or (in aliquots) at -20°C for longer. Avoid repeated freezing and thawing.
Stability:	Shelf life: one year from despatch.
Predicted Protein Size:	36106 Da
Gene Name:	immunoglobulin heavy constant gamma 1 (G1m marker)
Database Link:	Entrez Gene 3500 Human P01857
Synonyms:	Ig gamma-1 chain C region

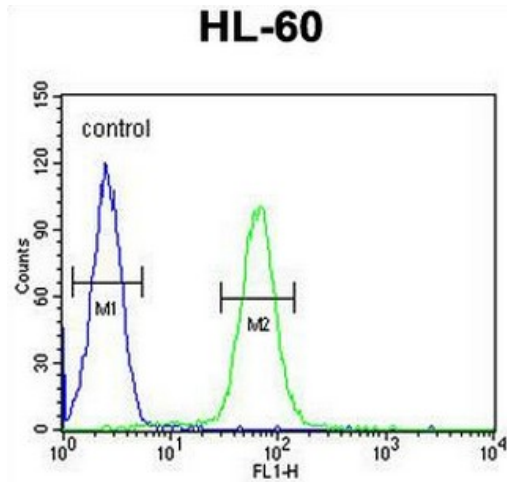


[View online »](#)

Product images:



IGHG1 Antibody (Center) western blot analysis in HL-60 cell line lysates (35ug/lane). This demonstrates the IGHG1 antibody detected the IGHG1 protein (arrow).



IGHG1 Antibody (Center) flow cytometric analysis of HL-60 cells (right histogram) compared to a negative control cell (left histogram). FITC-conjugated goat-anti-rabbit secondary antibodies were used for the analysis.