

## Product datasheet for **AP52167PU-N**

### IgE (IGHE) (Center) Rabbit Polyclonal Antibody

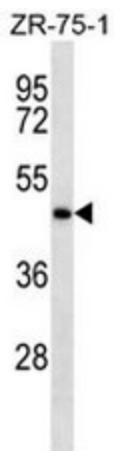
#### Product data:

Product Type:	Primary Antibodies
Applications:	WB
Recommended Dilution:	<b>ELISA:</b> 1/1000. <b>Western Blot:</b> 1/100 - 1/500.
Reactivity:	Human
Host:	Rabbit
Isotype:	Ig
Clonality:	Polyclonal
Immunogen:	KLH conjugated synthetic peptide between 245-275 amino acids from the Central region of human IGHE
Specificity:	This antibody reacts to IGHE.
Formulation:	PBS State: Aff - Purified State: Liquid purified Ig fraction Preservative: 0.09% (W/V) sodium azide
Concentration:	lot specific
Purification:	Affinity chromatography on Protein A
Conjugation:	Unconjugated
Storage:	Store the antibody undiluted at 2-8°C for one month or (in aliquots) at -20°C for longer. Avoid repeated freezing and thawing.
Stability:	Shelf life: one year from despatch.
Predicted Protein Size:	47019 Da
Gene Name:	immunoglobulin heavy constant epsilon
Database Link:	<a href="#">Entrez Gene 3497 Human P01854</a>
Synonyms:	Ig epsilon chain C region



[View online »](#)

## Product images:



IGHE Antibody (Center) western blot analysis in ZR-75-1 cell line lysates (35ug/lane). This demonstrates the IGHE antibody detected the IGHE protein (arrow).