

## Product datasheet for **AP52166PU-N**

### IGF2BP2 (C-term) Rabbit Polyclonal Antibody

#### Product data:

Product Type:	Primary Antibodies
Applications:	FC, IHC, WB
Recommended Dilution:	<b>ELISA:</b> 1/1000. <b>Western Blot:</b> 1/100 - 1/500. <b>Immunohistochemistry on paraffin sections:</b> 1/50 - 1/100. <b>Flow Cytometry:</b> 1/10 - 1/50.
Reactivity:	Human
Host:	Rabbit
Isotype:	Ig
Clonality:	Polyclonal
Immunogen:	KLH conjugated synthetic peptide between 537-564 amino acids from the C-terminal region of human IGF2BP2
Specificity:	This antibody reacts to IGF2BP2.
Formulation:	PBS State: Aff - Purified State: Liquid purified Ig fraction Preservative: 0.09% (W/V) sodium azide
Concentration:	lot specific
Purification:	Affinity chromatography on Protein A
Conjugation:	Unconjugated
Storage:	Store the antibody undiluted at 2-8°C for one month or (in aliquots) at -20°C for longer. Avoid repeated freezing and thawing.
Stability:	Shelf life: one year from despatch.
Predicted Protein Size:	66121 Da
Gene Name:	insulin like growth factor 2 mRNA binding protein 2
Database Link:	<a href="#">Entrez Gene 10644 Human Q9Y6M1</a>



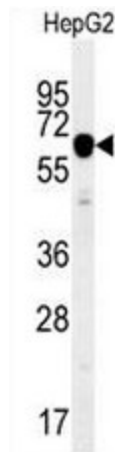
[View online »](#)

**Background:**

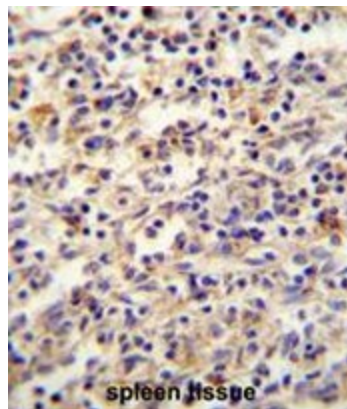
This gene encodes a member of the IGF-II mRNA-binding protein (IMP) family. The protein encoded by this gene contains several four KH domains and two RRM domains. It functions by binding to the 5' UTR of the insulin-like growth factor 2 (IGF2) mRNA and regulating IGF2 translation. Alternate transcriptional splice variants, encoding different isoforms, have been characterized.

**Synonyms:**

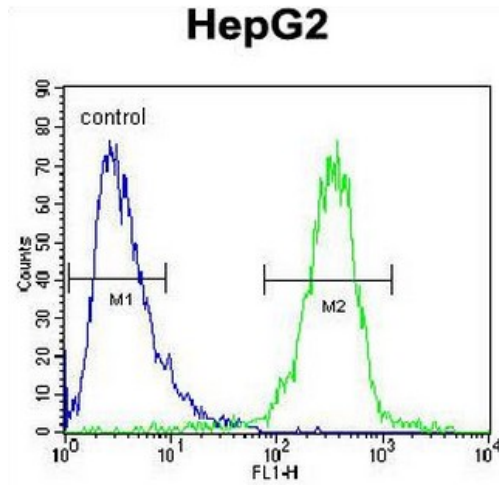
IMP2, IMP-2, VICKZ2

**Product images:**

IGF2BP2 Antibody (C-term) western blot analysis in HepG2 cell line lysates (35ug/lane). This demonstrates the IGF2BP2 antibody detected the IGF2BP2 protein (arrow).



IGF2BP2 antibody (C-term) immunohistochemistry analysis in formalin fixed and paraffin embedded human spleen tissue followed by peroxidase conjugation of the secondary antibody and DAB staining. This data demonstrates the use of the IGF2BP2 antibody (C-term) for immunohistochemistry. Clinical relevance has not been evaluated.



IGF2BP2 Antibody (C-term) flow cytometric analysis of HepG2 cells (right histogram) compared to a negative control cell (left histogram). FITC-conjugated goat-anti-rabbit secondary antibodies were used for the analysis.