

Product datasheet for **AP52165PU-N**

IGF2BP1 (C-term) Rabbit Polyclonal Antibody

Product data:

Product Type:	Primary Antibodies
Applications:	FC, IHC, WB
Recommended Dilution:	ELISA: 1/1000. Western Blot: 1/100 - 1/500. Immunohistochemistry on paraffin sections: 1/50 - 1/100. Flow Cytometry: 1/10 - 1/50.
Reactivity:	Human
Host:	Rabbit
Isotype:	Ig
Clonality:	Polyclonal
Immunogen:	KLH conjugated synthetic peptide between 515-542 amino acids from the C-terminal region of human IGF2BP1
Specificity:	This antibody reacts to IGF2BP1.
Formulation:	PBS State: Aff - Purified State: Liquid purified Ig fraction Preservative: 0.09% (W/V) sodium azide
Concentration:	lot specific
Purification:	Affinity chromatography on Protein A
Conjugation:	Unconjugated
Storage:	Store the antibody undiluted at 2-8°C for one month or (in aliquots) at -20°C for longer. Avoid repeated freezing and thawing.
Stability:	Shelf life: one year from despatch.
Predicted Protein Size:	63481 Da
Gene Name:	Homo sapiens insulin like growth factor 2 mRNA binding protein 1 (IGF2BP1), transcript variant 1
Database Link:	Entrez Gene 10642 Human Q9NZI8



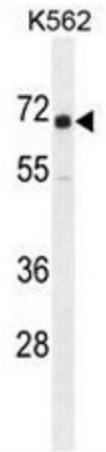
[View online »](#)

Background:

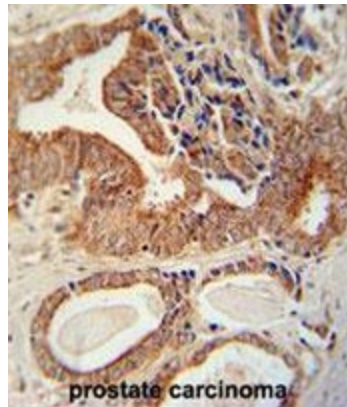
IGF2BP1 is a member of the insulin-like growth factor 2 mRNA-binding protein family. The protein encoded by this gene contains four K homology domains and two RNA recognition motifs. It functions by binding to the mRNAs of certain genes, including insulin-like growth factor 2, beta-actin and beta-transducin repeat-containing protein, and regulating their translation. Two transcript variants encoding different isoforms have been found for this gene.

Synonyms:

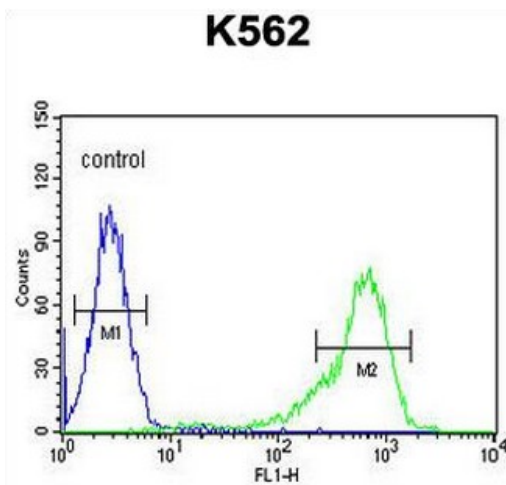
CRDBP, VICKZ1, ZBP1, CRD-BP, ZBP-1

Product images:


IGF2BP1 Antibody (C-term) western blot analysis in K562 cell line lysates (35ug/lane). This demonstrates the IGF2BP1 antibody detected the IGF2BP1 protein (arrow).



IGF2BP1 antibody (C-term) immunohistochemistry analysis in formalin fixed and paraffin embedded human prostate carcinoma followed by peroxidase conjugation of the secondary antibody and DAB staining. This data demonstrates the use of the IGF2BP1 antibody (C-term) for immunohistochemistry. Clinical relevance has not been evaluated.



IGF2BP1 Antibody (C-term) flow cytometric analysis of K562 cells (right histogram) compared to a negative control cell (left histogram). FITC-conjugated goat-anti-rabbit secondary antibodies were used for the analysis.