

Product datasheet for **AP52163PU-N**

IGF2 (Center) Rabbit Polyclonal Antibody

Product data:

Product Type:	Primary Antibodies
Applications:	FC, IHC, WB
Recommended Dilution:	ELISA: 1/1000. Western Blot: 1/1000. Flow Cytometry: 1/10-1/50. Immunohistochemistry on Paraffin Sections: 1/50-1/100.
Reactivity:	Human
Host:	Rabbit
Isotype:	Ig
Clonality:	Polyclonal
Immunogen:	KLH conjugated synthetic peptide between 39-68 amino acids from the Central region of Human IGF2.
Specificity:	This antibody recognizes Human and Mouse IGF2 (Center).
Formulation:	PBS containing 0.09% (W/V) Sodium Azide as preservative State: Aff - Purified State: Liquid purified Ig fraction
Concentration:	lot specific
Purification:	Protein A column, followed by peptide affinity purification
Conjugation:	Unconjugated
Storage:	Store undiluted at 2-8°C for one month or (in aliquots) at -20°C for longer. Avoid repeated freezing and thawing.
Stability:	Shelf life: one year from despatch.
Gene Name:	insulin like growth factor 2
Database Link:	Entrez Gene 3481 Human P01344



[View online »](#)

Background:

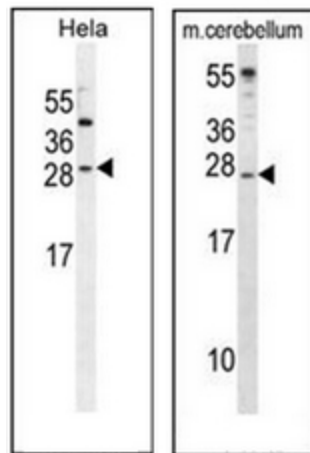
This gene encodes a member of the insulin family of polypeptide growth factors, which are involved in development and growth. It is an imprinted gene, expressed only from the paternal allele, and epigenetic changes at this locus are associated with Wilms tumour, Beckwith-Wiedemann syndrome, rhabdomyosarcoma, and Silver-Russell syndrome. A read-through INS-IGF2 gene exists, whose 5' region overlaps the INS gene and the 3' region overlaps this gene. Alternatively spliced transcript variants encoding different isoforms have been found for this gene.

Synonyms:

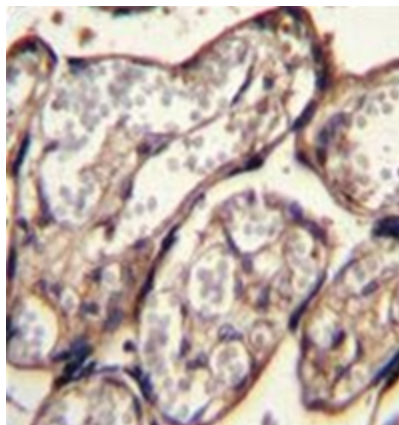
IGF-II, Somatomedin-A

Protein Families:

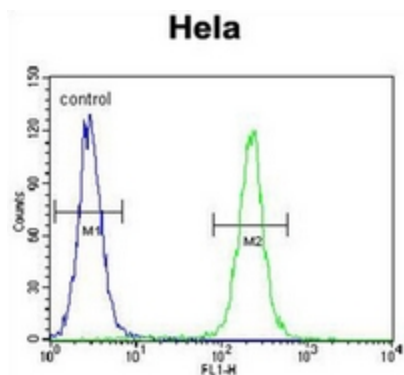
Druggable Genome, ES Cell Differentiation/IPS, Secreted Protein

Product images:


Western blot analysis of IGF2 Antibody in HeLa and cell line lysates and in Mouse cerebellum tissue lysates (35ug/lane). This demonstrates the IGF2 antibody detected the IGF2 protein (arrow).



Formalin fixed and paraffin embedded human placenta tissue stained with IGF2 Antibody followed by peroxidase conjugation of the secondary antibody and DAB staining.



Flow cytometric analysis of HeLa cells using IGF2 Antibody (right histogram) compared to a negative control cell (left histogram). FITC-conjugated goat-anti-rabbit secondary antibodies were used for the analysis.