

## Product datasheet for **AP52162PU-N**

### IGBP1 (Center) Rabbit Polyclonal Antibody

#### Product data:

Product Type:	Primary Antibodies
Applications:	WB
Recommended Dilution:	<b>ELISA:</b> 1/1000. <b>Western Blot:</b> 1/100 - 1/500.
Reactivity:	Human
Host:	Rabbit
Isotype:	Ig
Clonality:	Polyclonal
Immunogen:	KLH conjugated synthetic peptide between 141-171 amino acids from the Central region of human IGBP1
Specificity:	This antibody reacts to IGBP1.
Formulation:	PBS State: Aff - Purified State: Liquid purified Ig fraction Preservative: 0.09% (W/V) sodium azide
Concentration:	lot specific
Purification:	Affinity chromatography on Protein A
Conjugation:	Unconjugated
Storage:	Store the antibody undiluted at 2-8°C for one month or (in aliquots) at -20°C for longer. Avoid repeated freezing and thawing.
Stability:	Shelf life: one year from despatch.
Predicted Protein Size:	39222 Da
Gene Name:	immunoglobulin (CD79A) binding protein 1
Database Link:	<a href="#">Entrez Gene 3476 Human P78318</a>



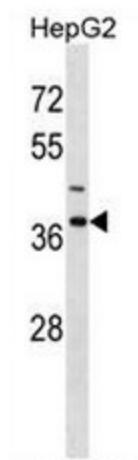
[View online »](#)

**Background:** The proliferation and differentiation of B cells is dependent upon a B-cell antigen receptor (BCR) complex. Binding of antigens to specific B-cell receptors results in a tyrosine phosphorylation reaction through the BCR complex and leads to multiple signal transduction pathways.

**Synonyms:** Immunoglobulin-binding protein 1, IBP1, NY-REN-16, Protein alpha-4

**Protein Families:** Druggable Genome

**Product images:**



IGBP1 Antibody (Center) western blot analysis in HepG2 cell line lysates (35ug/lane). This demonstrates the IGBP1 antibody detected the IGBP1 protein (arrow).