

Product datasheet for **AP52161PU-N**

TTC10 (IFT88) (C-term) Rabbit Polyclonal Antibody

Product data:

| | |
|-------------------------|--|
| Product Type: | Primary Antibodies |
| Applications: | IF, IHC, WB |
| Recommended Dilution: | ELISA: 1/1000. Western Blot: 1/1000. Immunohistochemistry on Paraffin Sections: 1/10-1/50. Immunofluorescence: 1/10-1/50. |
| Reactivity: | Human, Mouse |
| Host: | Rabbit |
| Isotype: | Ig |
| Clonality: | Polyclonal |
| Immunogen: | KLH conjugated synthetic peptide between 791-820 amino acids from the C-terminal region of Human IFT88. Antigen Region: 791-820 aa |
| Specificity: | This antibody recognizes IFT8 (C-term). |
| Formulation: | PBS State: Aff - Purified State: Liquid purified Ig fraction Preservative: 0.09% (W/V) Sodium Azide |
| Concentration: | lot specific |
| Purification: | Affinity Chromatography on Protein A |
| Conjugation: | Unconjugated |
| Storage: | Store undiluted at 2-8°C for one month or (in aliquots) at -20°C for longer. Avoid repeated freezing and thawing. |
| Stability: | Shelf life: one year from despatch. |
| Predicted Protein Size: | 94270 Da |
| Gene Name: | intraflagellar transport 88 |
| Database Link: | Entrez Gene 21821 Mouse Entrez Gene 8100 Human Q13099 |

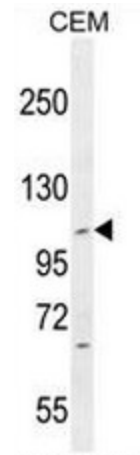


[View online »](#)

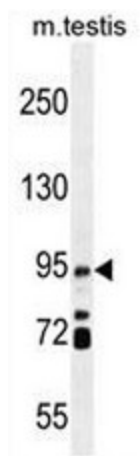
Background: This gene encodes a member of the tetratricopeptide repeat (TPR) family. Mutations of a similar gene in mouse can cause polycystic kidney disease. Two transcript variants encoding distinct isoforms have been identified for this gene. [provided by RefSeq].

Synonyms: TG737, TTC10, Intraflagellar transport protein 88 homolog, Tetratricopeptide repeat protein 10, TPR repeat protein 10

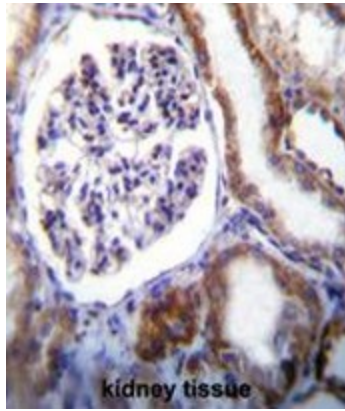
Product images:



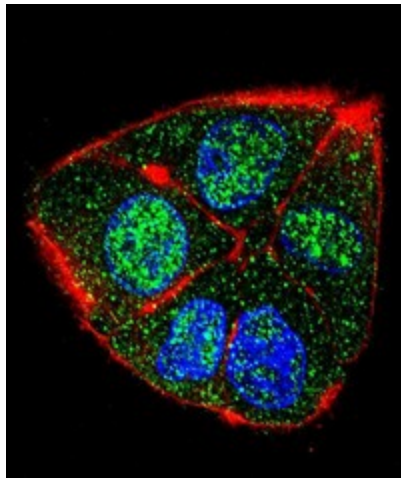
IFT88 Antibody (C-term) western blot analysis in CEM cell line lysates (35ug/lane). This demonstrates the IFT88 antibody detected the IFT88 protein (arrow)



IFT88 Antibody (C-term) western blot analysis in mouse testis tissue lysates (35ug/lane). This demonstrates the IFT88 antibody detected the IFT88 protein (arrow).



IFT88 Antibody (C-term) immunohistochemistry analysis in formalin fixed and paraffin embedded human kidney tissue followed by peroxidase conjugation of the secondary antibody and DAB staining. This data demonstrates the use of IFT88 Antibody (C-term) for immunohistochemistry. Clinical relevance has not been evaluated.



Confocal immunofluorescent analysis of IFT88 Antibody (C-term) with HepG2 cell followed by Alexa Fluor 488-conjugated goat anti-rabbit IgG (green). Actin filaments have been labeled with Alexa Fluor 555 phalloidin (red). DAPI was used to stain the cell nuclear (blue).