

Product datasheet for **AP52160PU-N**

IFT81 (C-term) Rabbit Polyclonal Antibody

Product data:

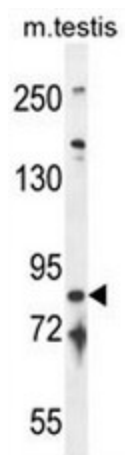
Product Type:	Primary Antibodies
Applications:	WB
Recommended Dilution:	ELISA: 1/1000. Western Blot: 1/100 - 1/500.
Reactivity:	Human, Mouse
Host:	Rabbit
Isotype:	Ig
Clonality:	Polyclonal
Immunogen:	KLH conjugated synthetic peptide between 534-563 amino acids from the C-terminal region of human IFT81
Specificity:	This antibody reacts to IFT81.
Formulation:	PBS State: Aff - Purified State: Liquid purified Ig fraction Preservative: 0.09% (W/V) sodium azide
Concentration:	lot specific
Purification:	Affinity chromatography on Protein A
Conjugation:	Unconjugated
Storage:	Store the antibody undiluted at 2-8°C for one month or (in aliquots) at -20°C for longer. Avoid repeated freezing and thawing.
Stability:	Shelf life: one year from despatch.
Predicted Protein Size:	79746 Da
Gene Name:	intraflagellar transport 81
Database Link:	Entrez Gene 28981 Human Q8WYAO
Background:	Isoform CDV-1 may be involved in cardiac hypertrophy caused by carnitine deficiency (By similarity). Isoform CDV-1R appears to play a role in development of the testis and spermatogenesis (By similarity).



[View online »](#)

Synonyms: CDV-1

Product images:



IFT81 Antibody (C-term) western blot analysis in mouse testis tissue lysates (35ug/lane). This demonstrates the IFT81 antibody detected the IFT81 protein (arrow).