

## Product datasheet for **AP52154PU-N**

### IFITM5 (Center) Rabbit Polyclonal Antibody

#### Product data:

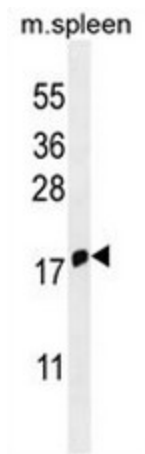
Product Type:	Primary Antibodies
Applications:	WB
Recommended Dilution:	<b>ELISA:</b> 1/1000. <b>Western Blot:</b> 1/100 - 1/500.
Reactivity:	Human, Mouse
Host:	Rabbit
Isotype:	Ig
Clonality:	Polyclonal
Immunogen:	KLH conjugated synthetic peptide between 55-83 amino acids from the Central region of human IFITM5
Specificity:	This antibody reacts to IFITM5.
Formulation:	PBS State: Aff - Purified State: Liquid purified Ig fraction Preservative: 0.09% (W/V) sodium azide
Concentration:	lot specific
Purification:	Affinity chromatography on Protein A
Conjugation:	Unconjugated
Storage:	Store the antibody undiluted at 2-8°C for one month or (in aliquots) at -20°C for longer. Avoid repeated freezing and thawing.
Stability:	Shelf life: one year from despatch.
Predicted Protein Size:	14378 Da
Gene Name:	interferon induced transmembrane protein 5
Database Link:	<a href="#">Entrez Gene 73835 Mouse</a> <a href="#">Entrez Gene 387733 Human</a> <a href="#">A6NNB3</a>
Synonyms:	Interferon-induced transmembrane protein 5, Bone-restricted interferon-induced transmembrane protein-like protein, BRIL, Dispanin subfamily A member 1, DSPA1



[View online »](#)

Protein Families: Transmembrane

**Product images:**



IFITM5 Antibody (Center) western blot analysis in mouse spleen tissue lysates (35ug/lane). This demonstrates the IFITM5 antibody detected the IFITM5 protein (arrow).