

Product datasheet for **AP52152PU-N**

IFI6 (N-term) Rabbit Polyclonal Antibody

Product data:

Product Type:	Primary Antibodies
Applications:	WB
Recommended Dilution:	ELISA: 1/1,000. Western Blot: 1/1,000.
Reactivity:	Human
Host:	Rabbit
Isotype:	Ig
Clonality:	Polyclonal
Immunogen:	KLH conjugated synthetic peptide between 5-34 amino acids from the N-terminal region of Human IFI6
Specificity:	This antibody reacts to IFI6.
Formulation:	PBS State: Aff - Purified State: Liquid purified Ig fraction Preservative: 0.09% (W/V) sodium azide
Concentration:	lot specific
Purification:	Affinity chromatography on Protein A
Conjugation:	Unconjugated
Storage:	Store undiluted at 2-8°C for one month or (in aliquots) at -20°C for longer. Avoid repeated freezing and thawing.
Stability:	Shelf life: one year from despatch.
Predicted Protein Size:	12927 Da
Gene Name:	interferon alpha inducible protein 6
Database Link:	Entrez Gene 2537 Human P09912



[View online »](#)

Background:

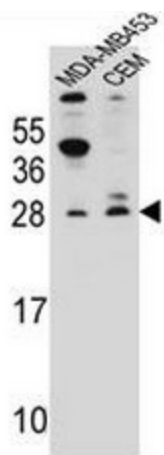
This gene was first identified as one of the many genes induced by interferon. The encoded protein may play a critical role in the regulation of apoptosis. A minisatellite that consists of 26 repeats of a 12 nucleotide repeating element resembling the mammalian splice donor consensus sequence begins near the end of the second exon. Alternatively spliced transcript variants that encode different isoforms by using the two downstream repeat units as splice donor sites have been described.

Synonyms:

lfi-6-16

Protein Families:

Transmembrane

Product images:

IFI6 Antibody (N-term) western blot analysis in MDA-MB453, CEM cell line lysates (35ug/lane). This demonstrates the IFI6 antibody detected the IFI6 protein (arrow).