

Product datasheet for **AP52151PU-N**

IFI35 (N-term) Rabbit Polyclonal Antibody

Product data:

Product Type:	Primary Antibodies
Applications:	IHC, WB
Recommended Dilution:	ELISA: 1/1000. Western Blot: 1/100-1/500. Immunohistochemistry on Paraffin Sections: 1/50-1/100.
Reactivity:	Human
Host:	Rabbit
Isotype:	Ig
Clonality:	Polyclonal
Immunogen:	KLH conjugated synthetic peptide between 22-49 amino acids from the N-terminal region of Human IFI3
Specificity:	This antibody recognizes Human IFI35 (N-term).
Formulation:	PBS State: Aff - Purified State: Liquid purified Ig fraction Preservative: 0.09% (W/V) Sodium Azide
Concentration:	lot specific
Purification:	Protein A column, followed by peptide affinity purification
Conjugation:	Unconjugated
Storage:	Store undiluted at 2-8°C for one month or (in aliquots) at -20°C for longer. Avoid repeated freezing and thawing.
Stability:	Shelf life: one year from despatch.
Predicted Protein Size:	31546 Da
Gene Name:	interferon induced protein 35
Database Link:	Entrez Gene 3430 Human P80217



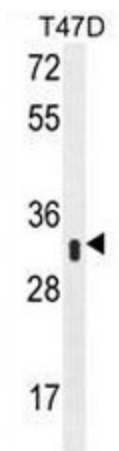
[View online »](#)

Background:

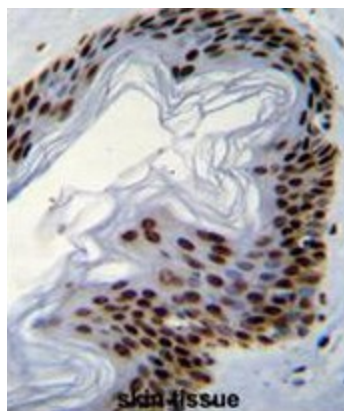
Inhibins and activins inhibit and activate, respectively, the secretion of follitropin by the pituitary gland. Inhibins/activins are involved in regulating a number of diverse functions such as hypothalamic and pituitary hormone secretion, gonadal hormone secretion, germ cell development and maturation, erythroid differentiation, insulin secretion, nerve cell survival, embryonic axial development or bone growth, depending on their subunit composition. Inhibins appear to oppose the functions of activins.

Synonyms:

IFI-35

Product images:


Western blot analysis of IFI35 Antibody (N-term) in T47D cell line lysates (35ug/lane). This demonstrates the IFI35 antibody detected the IFI35 protein (arrow).



Formalin fixed, paraffin embedded human skin tissue stained with IFI35 Antibody (N-term) followed by peroxidase conjugation of the secondary antibody and DAB staining.