

## Product datasheet for **AP52148PU-N**

### IEX1 (IER3) (N-term) Rabbit Polyclonal Antibody

#### Product data:

Product Type:	Primary Antibodies
Applications:	FC, IF, IHC, WB
Recommended Dilution:	<b>Peptide ELISA:</b> 1/1000. <b>Western Blot:</b> 1/1000. <b>Flow Cytometry:</b> 1/10-1/50. <b>Immunofluorescence:</b> 1/10-1/50. <b>Immunohistochemistry on Paraffin Sections:</b> 1/50-1/100.
Reactivity:	Human, Mouse
Host:	Rabbit
Isotype:	Ig
Clonality:	Polyclonal
Immunogen:	KLH conjugated synthetic peptide between 38-65 amino acids from the N-terminal region of human IER3 / IEX1
Specificity:	This antibody recognizes Human and Mouse IER3 / IEX1 (N-term).
Formulation:	PBS containing 0.09% (W/V) Sodium Azide as preservative State: Aff - Purified State: Liquid purified Ig fraction
Concentration:	lot specific
Purification:	Protein A column, followed by peptide affinity purification
Conjugation:	Unconjugated
Storage:	Store undiluted at 2-8°C for one month or (in aliquots) at -20°C for longer. Avoid repeated freezing and thawing.
Stability:	Shelf life: one year from despatch.
Gene Name:	immediate early response 3
Database Link:	<a href="#">Entrez Gene 15937 Mouse</a> <a href="#">Entrez Gene 8870 Human</a> <a href="#">P46695</a>



[View online »](#)

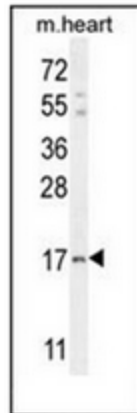
**Background:** This gene functions in the protection of cells from Fas- or tumor necrosis factor type alpha-induced apoptosis. Partially degraded and unspliced transcripts are found after virus infection *in vitro*, but these transcripts are not found *in vivo* and do not generate a valid protein.

**Synonyms:** DIF2, IEX-1, PRG1, GLY96

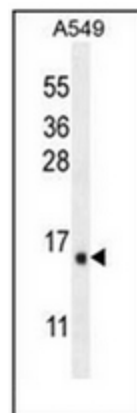
**Note:** **Molecular Weight:** 16929 Da

**Protein Families:** Druggable Genome

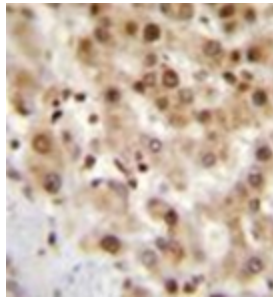
### Product images:



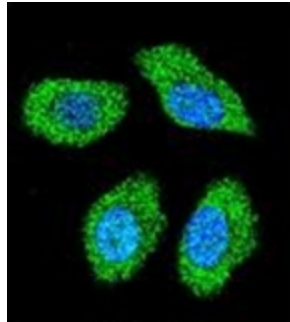
Western blot analysis of IER3 / IEX1 Antibody (N-term) in mouse heart tissue lysates (35ug/lane). This demonstrates the IER3 antibody detected the IER3 protein (arrow).



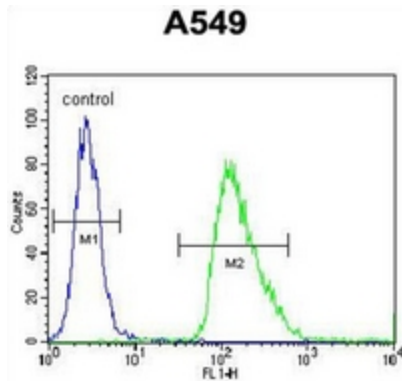
Western blot analysis of IER3 / IEX1 Antibody (N-term) in A549 cell line lysates (35ug/lane). This demonstrates the IER3 antibody detected the IER3 protein (arrow).



Immunohistochemistry analysis in formalin fixed and paraffin embedded human liver tissue reacted with IER3 / IEX1 Antibody (N-term), which was peroxidase conjugated to the secondary antibody and followed by AB staining.



Confocal immunofluorescent analysis of IER3 / IEX1 Antibody (N-term) with A549 cell followed by Alexa Fluor 488-conjugated goat anti-rabbit IgG (green). DAPI was used to stain the cell nuclear (blue).



Flow cytometric analysis of A549 cells using IER3 / IEX1 Antibody (N-term) (right histogram) compared to a negative control cell (left histogram). FITC-conjugated goat-anti-rabbit secondary antibodies were used for the analysis.