

## Product datasheet for **AP52146PU-N**

### CTLA4 (N-term) Rabbit Polyclonal Antibody

#### Product data:

Product Type:	Primary Antibodies
Applications:	IHC, WB
Recommended Dilution:	<b>Western Blot:</b> 1/2000. <b>Immunohistochemistry on Paraffin Sections:</b> 1/50-1/100.
Reactivity:	Human
Host:	Rabbit
Isotype:	Ig
Clonality:	Polyclonal
Immunogen:	KLH conjugated synthetic peptide between 50-78 amino acids from the N-terminal region of Human CD152 / CTLA4.
Specificity:	This antibody recognizes Human CD152 / CTLA4 (N-term).
Formulation:	PBS State: Aff - Purified State: Liquid purified Ig fraction Preservative: 0.09% Sodium Azide
Concentration:	lot specific
Purification:	Affinity Chromatography on Protein A
Conjugation:	Unconjugated
Storage:	Store undiluted at 2-8°C for one month or (in aliquots) at -20°C for longer. Avoid repeated freezing and thawing.
Stability:	Shelf life: one year from despatch.
Gene Name:	cytotoxic T-lymphocyte associated protein 4
Database Link:	<a href="#">Entrez Gene 1493 Human P16410</a>



[View online »](#)

**Background:**

CTLA4 is a member of the immunoglobulin superfamily and encodes a protein which transmits an inhibitory signal to T cells. The protein contains a V domain, a transmembrane domain, and a cytoplasmic tail. Alternate transcriptional splice variants, encoding different isoforms, have been characterized. The membrane-bound isoform functions as a homodimer interconnected by a disulfide bond, while the soluble isoform functions as a monomer. Mutations in this gene have been associated with insulin-dependent diabetes mellitus, Graves disease, Hashimoto thyroiditis, celiac disease, systemic lupus erythematosus, thyroid-associated orbitopathy, and other autoimmune diseases.

**Synonyms:**

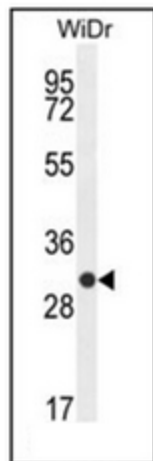
CTLA-4

**Protein Families:**

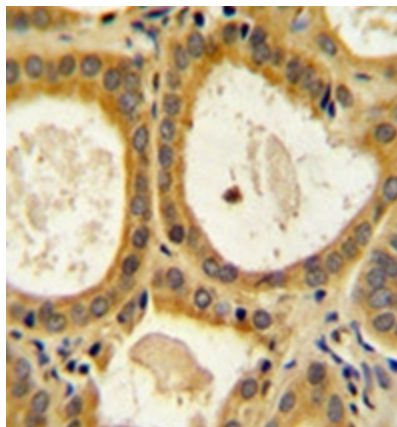
Druggable Genome, Transmembrane

**Protein Pathways:**

Autoimmune thyroid disease, Cell adhesion molecules (CAMs), T cell receptor signaling pathway

**Product images:**


Western blot analysis of CD152 / CTLA4 Antibody (N-term) in WiDr cell line lysates (35ug/lane).



Formalin fixed and paraffin embedded human prostate carcinoma reacted with CD152 / CTLA4 Antibody (N-term) followed by peroxidase conjugation of the secondary antibody and DAB staining.