

Product datasheet for **AP52145PU-N**

ID4 (N-term) Rabbit Polyclonal Antibody

Product data:

Product Type:	Primary Antibodies
Applications:	FC, IHC, WB
Recommended Dilution:	ELISA: 1/1000. Western Blot: 1/100-1/500. Flow Cytometry: 1/10-1/50. Immunohistochemistry on Paraffin Sections: 1/50-1/100.
Reactivity:	Human, Mouse
Host:	Rabbit
Isotype:	Ig
Clonality:	Polyclonal
Immunogen:	KLH conjugated synthetic peptide between 1~30 amino acids from the N-terminal region of Human ID4 / BHLHB27
Specificity:	This antibody recognizes Human and Mouse ID4 / BHLHB27 (N-term).
Formulation:	PBS containing 0.09% (W/V) Sodium Azide as preservative State: Aff - Purified State: Liquid purified Ig fraction
Concentration:	lot specific
Purification:	Protein A column, followed by peptide affinity purification
Conjugation:	Unconjugated
Storage:	Store undiluted at 2-8°C for one month or (in aliquots) at -20°C for longer. Avoid repeated freezing and thawing.
Stability:	Shelf life: one year from despatch.
Gene Name:	inhibitor of DNA binding 4, HLH protein
Database Link:	Entrez Gene 15904 Mouse Entrez Gene 3400 Human P47928



[View online »](#)

Background: ID4 is transcription factors containing a basic helix-loop-helix (bHLH) motif regulate expression of tissue-specific genes in a number of mammalian and insect systems. DNA-binding activity of the bHLH proteins is dependent on formation of homo- and/or heterodimers. Dominant-negative HLH proteins encoded by Id-related genes, such as ID4, also contain the HLH-dimerization domain but lack the DNA-binding basic domain. Consequently, Id proteins inhibit binding to DNA and transcriptional transactivation by heterodimerization with bHLH proteins.

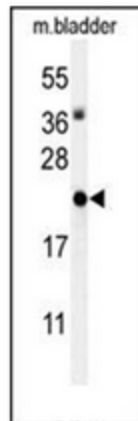
Synonyms: DNA-binding protein inhibitor ID-4, Inhibitor of DNA binding 4

Note: **Molecular Weight:** 16622 Da

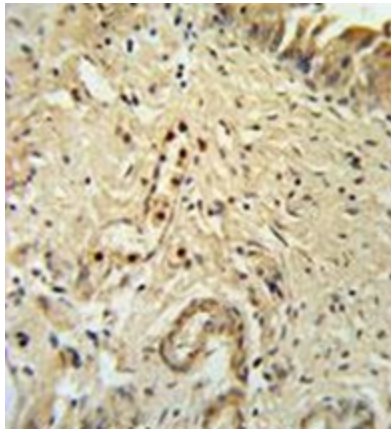
Protein Families: ES Cell Differentiation/IPS, Transcription Factors

Protein Pathways: TGF-beta signaling pathway

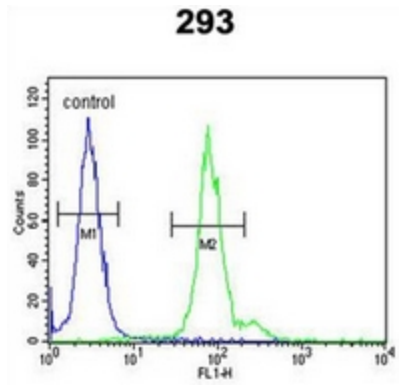
Product images:



Western blot analysis of ID4 Antibody (N-term) in Mouse bladder tissue lysates (35ug/lane). ID4 (arrow) was detected using the purified Pab.



Immunohistochemistry analysis in formalin fixed and paraffin embedded bladder carcinoma reated with ID4 Antibody (N-term), which was peroxidase conjugated to the secondary antibody and followed by DAB staining.



Flow cytometric analysis of 293 cells using ID4 Antibody (N-term) (right histogram) compared to a negative control cell (left histogram). FITC-conjugated goat-anti-rabbit secondary antibodies were used for the analysis.