

Product datasheet for **AP52144PU-N**

ID1 (Center) Rabbit Polyclonal Antibody

Product data:

| | |
|-----------------------|--|
| Product Type: | Primary Antibodies |
| Applications: | FC, IF, IHC, WB |
| Recommended Dilution: | ELISA: 1/1000. Western Blot: 1/100-1/500. Flow Cytometry: 1/10-1/50. Immunofluorescence: 1/10-1/50. Immunohistochemistry on Paraffin Sections: 1/10-1/50. |
| Reactivity: | Human, Mouse |
| Host: | Rabbit |
| Isotype: | Ig |
| Clonality: | Polyclonal |
| Immunogen: | KLH conjugated synthetic peptide between 73-101 amino acids from the Central region of Human ID1 / BHLHB24 |
| Specificity: | This antibody recognizes Human and Mouse ID1 / BHLHB24 (Center). |
| Formulation: | PBS containing 0.09% (W/V) Sodium Azide as preservative State: Aff - Purified State: Liquid purified Ig fraction |
| Concentration: | lot specific |
| Purification: | Protein A column, followed by peptide affinity purification |
| Conjugation: | Unconjugated |
| Storage: | Store undiluted at 2-8°C for one month or (in aliquots) at -20°C for longer. Avoid repeated freezing and thawing. |
| Stability: | Shelf life: one year from despatch. |
| Gene Name: | inhibitor of DNA binding 1, HLH protein |
| Database Link: | Entrez Gene 15901 Mouse Entrez Gene 3397 Human P41134 |



[View online »](#)

Background: The protein encoded by this gene is a helix-loop-helix (HLH) protein that can form heterodimers with members of the basic HLH family of transcription factors. The encoded protein has no DNA binding activity and therefore can inhibit the DNA binding and transcriptional activation ability of basic HLH proteins with which it interacts. This protein may play a role in cell growth, senescence, and differentiation. Two transcript variants encoding different isoforms have been found for this gene. [provided by RefSeq].

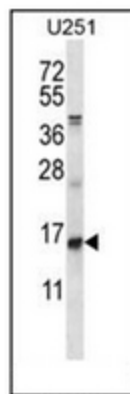
Synonyms: DNA-binding protein inhibitor ID-1, Inhibitor of DNA binding 1

Note: **Molecular Weight:** 16133 Da

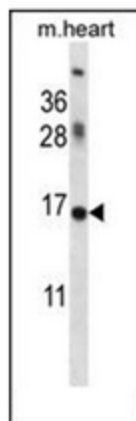
Protein Families: Druggable Genome, Transcription Factors

Protein Pathways: TGF-beta signaling pathway

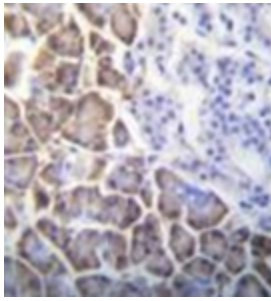
Product images:



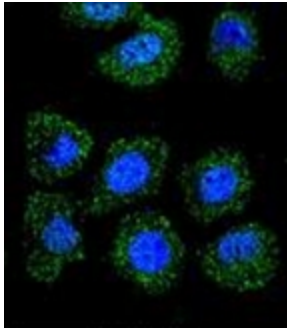
Western blot analysis of ID1 / BHLHB24 Antibody (Center) in U251 cell line lysates (35ug/lane). This demonstrates the ID1 antibody detected the ID1 protein (arrow).



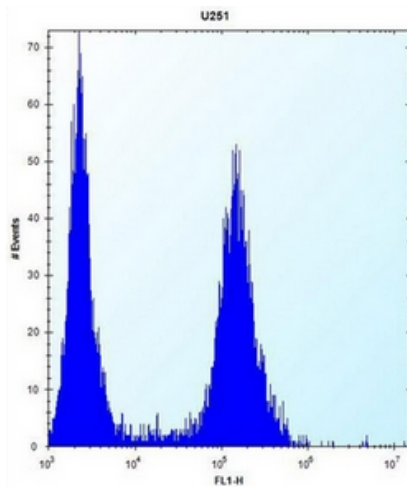
Western blot analysis of ID1 / BHLHB24 Antibody (Center) in mouse heart tissue lysates (35ug/lane). This demonstrates the ID1 (PEI 1:100) antibody detected the ID1 protein (arrow).



Immunohistochemistry analysis in formalin fixed and paraffin embedded human pancreas tissue reacted with ID1 / BHLHB24 Antibody (Center), which was peroxidase conjugated to the secondary antibody and followed by DAB staining.



Confocal immunofluorescent analysis of ID1 / BHLHB24 Antibody (Center) with U-251MG cell followed by Alexa Fluor 488-conjugated goat anti-rabbit IgG (green). DAPI was used to stain the cell nuclear (blue).



Flow cytometric analysis of U251 cells using ID1 / BHLHB24 Antibody (Center) (right histogram) compared to a negative control cell (left histogram). FITC-conjugated goat-anti-rabbit secondary antibodies were used for the analysis.