

Product datasheet for **AP52142PU-N**

PIP3E (IPCEF1) (C-term) Rabbit Polyclonal Antibody

Product data:

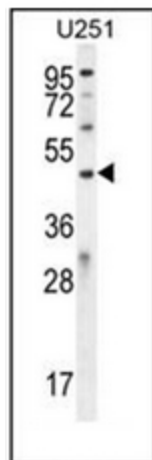
Product Type:	Primary Antibodies
Applications:	FC, WB
Recommended Dilution:	ELISA: 1/1000. Western Blot: 1/100-1/500. Flow Cytometry: 1/10-1/50.
Reactivity:	Human
Host:	Rabbit
Isotype:	Ig
Clonality:	Polyclonal
Immunogen:	KLH conjugated synthetic peptide between 316-345 amino acids from the C-terminal region of human IPCEF1 / PIP3-E
Specificity:	This antibody recognizes Human IPCEF1 / PIP3-E (C-term).
Formulation:	PBS containing 0.09% (W/V) Sodium Azide as preservative State: Aff - Purified State: Liquid purified Ig fraction
Concentration:	lot specific
Purification:	Protein A column, followed by peptide affinity purification
Conjugation:	Unconjugated
Storage:	Store undiluted at 2-8°C for one month or (in aliquots) at -20°C for longer. Avoid repeated freezing and thawing.
Stability:	Shelf life: one year from despatch.
Gene Name:	Homo sapiens interaction protein for cytohesin exchange factors 1 (IPCEF1), transcript variant 1
Database Link:	Entrez Gene 26034 Human Q8WWN9
Background:	Enhances the promotion of guanine-nucleotide exchange by PSCD2 on ARF6 in a concentration-dependent manner (By similarity).
Synonyms:	KIAA0403



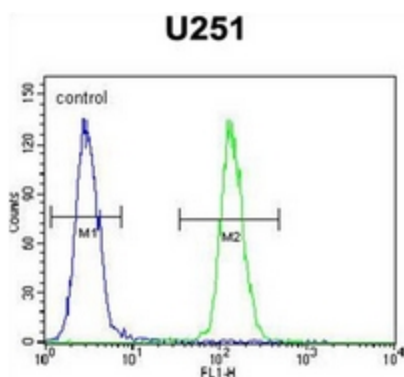
[View online »](#)

Note: **Molecular Weight:** 48993 Da

Product images:



Western blot analysis of IPCEF1 / PIP3-E Antibody (C-term) in U251 cell line lysates (35ug/lane). This demonstrates the ICEF1 antibody detected the ICEF1 protein (arrow).



Flow cytometric analysis of U251 cells using IPCEF1 / PIP3-E Antibody (C-term) (right histogram) compared to a negative control cell (left histogram). FITC-conjugated goat-anti-rabbit secondary antibodies were used for the analysis.