

Product datasheet for **AP52139PU-N**

ICA1 (N-term) Rabbit Polyclonal Antibody

Product data:

Product Type:	Primary Antibodies
Applications:	WB
Recommended Dilution:	ELISA: 1/1000. Western Blot: 1/100-1/500.
Reactivity:	Human
Host:	Rabbit
Isotype:	Ig
Clonality:	Polyclonal
Immunogen:	KLH conjugated synthetic peptide between 83-111 amino acids from the N-terminal region of human Islet cell autoantigen 1 / ICA1
Specificity:	This antibody recognizes Human Islet cell autoantigen 1 / ICA1 (N-term).
Formulation:	PBS containing 0.09% (W/V) Sodium Azide as preservative State: Aff - Purified State: Liquid purified Ig fraction
Concentration:	lot specific
Purification:	Protein A column, followed by peptide affinity purification
Conjugation:	Unconjugated
Storage:	Store undiluted at 2-8°C for one month or (in aliquots) at -20°C for longer. Avoid repeated freezing and thawing.
Stability:	Shelf life: one year from despatch.
Gene Name:	islet cell autoantigen 1
Database Link:	Entrez Gene 3382 Human Q05084



[View online »](#)

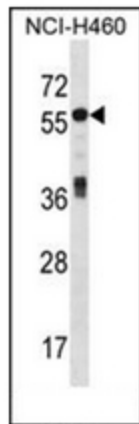
Background: This gene encodes a protein with an arfaptin homology domain that is found both in the cytosol and as membrane-bound form on the Golgi complex and immature secretory granules. This protein is believed to be an autoantigen in insulin-dependent diabetes mellitus and primary Sjogren's syndrome. Alternatively spliced variants which encode different protein isoforms have been described; however, not all variants have been fully characterized.

Synonyms: ICA69, ICAp69

Note: **Molecular Weight:** 54645 Da

Protein Pathways: Type I diabetes mellitus

Product images:



Western blot analysis of ICA1 Antibody (N-term) in NCI-H460 cell line lysates (35ug/lane). This demonstrates the ICA1 antibody detected the ICA1 protein (arrow).