

Product datasheet for **AP52138PU-N**

IBTK (Center) Rabbit Polyclonal Antibody

Product data:

Product Type:	Primary Antibodies
Applications:	FC, IHC, WB
Recommended Dilution:	ELISA: 1/1000. Western Blot: 1/100-1/500. Flow Cytometry: 1/10-1/50. Immunohistochemistry on Paraffin Sections: 1/50-1/100.
Reactivity:	Human
Host:	Rabbit
Isotype:	Ig
Clonality:	Polyclonal
Immunogen:	KLH conjugated synthetic peptide between 589-617 amino acids from the Central region of human IBTK / BTKI
Specificity:	This antibody recognizes Human IBTK / BTKI (Center).
Formulation:	PBS containing 0.09% (W/V) Sodium Azide as preservative State: Aff - Purified State: Liquid purified Ig fraction
Concentration:	lot specific
Purification:	Protein A column, followed by peptide affinity purification
Conjugation:	Unconjugated
Storage:	Store undiluted at 2-8°C for one month or (in aliquots) at -20°C for longer. Avoid repeated freezing and thawing.
Stability:	Shelf life: one year from despatch.
Gene Name:	inhibitor of Bruton tyrosine kinase
Database Link:	Entrez Gene 25998 Human Q9P2D0



[View online »](#)

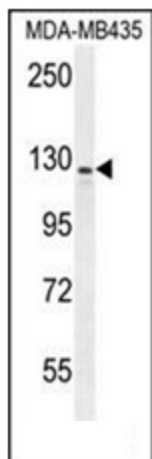
Background: The protein encoded by this gene binds to Bruton's tyrosine kinase (BTK) and downregulates BTK's kinase activity. In addition, the encoded protein disrupts BTK-mediated calcium mobilization and negatively regulates the activation of nuclear factor-kappa-B-driven transcription.

Synonyms: KIAA1417

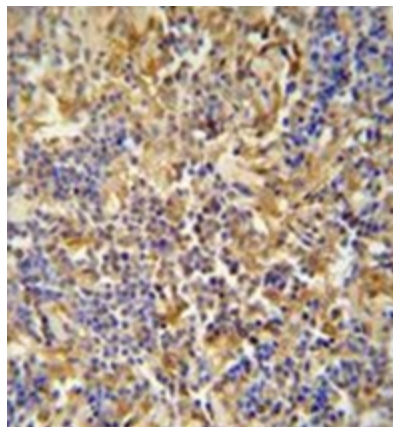
Note: **Molecular Weight:** 150528 Da (isoform 130kd Da)

Protein Families: Druggable Genome

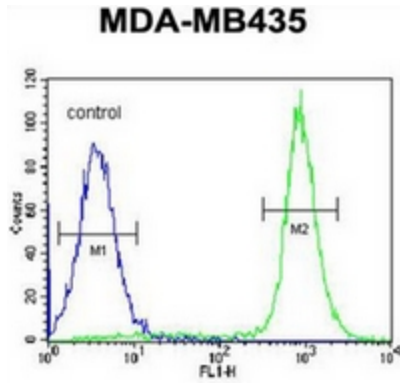
Product images:



Western blot analysis of IBTK / BTKI Antibody (Center) in MDA-MB435 cell line lysates (35ug/lane). This demonstrates the IBTK antibody detected the IBTK protein (arrow).



Immunohistochemistry analysis in formalin fixed and paraffin embedded human lymph tissue reacted with IBTK / BTKI Antibody (Center), which was peroxidase conjugated to the secondary antibody and followed by DAB staining.



Flow cytometric analysis of MDA-MB435 cells using IBTK / BTKI Antibody (Center) (right histogram) compared to a negative control cell (left histogram). FITC-conjugated goat-anti-rabbit secondary antibodies were used for the analysis.