

Product datasheet for **AP52135PU-N**

INDOL1 (IDO2) (C-term) Rabbit Polyclonal Antibody

Product data:

Product Type:	Primary Antibodies
Applications:	IHC, WB
Recommended Dilution:	Western Blot: 1/1000. Immunohistochemistry on Paraffin Sections: 1/10-1/50.
Reactivity:	Human
Host:	Rabbit
Isotype:	Ig
Clonality:	Polyclonal
Immunogen:	KLH conjugated synthetic peptide between 267-295 amino acids from the C-terminal region of Human IDO2 / INDOL1
Specificity:	This antibody recognizes Human IDO2 / INDOL1 (C-term). Other species not tested. Tissue Location: Liver, small intestine, spleen, placenta, thymus, lung, brain, kidney and colon.
Formulation:	PBS containing 0.09% (W/V) Sodium Azide as preservative State: Aff - Purified State: Liquid purified Ig fraction
Concentration:	lot specific
Purification:	Protein A column, followed by peptide affinity purification
Conjugation:	Unconjugated
Storage:	Store undiluted at 2-8°C for one month or (in aliquots) at -20°C for longer. Avoid repeated freezing and thawing.
Stability:	Shelf life: one year from despatch.
Gene Name:	indoleamine 2,3-dioxygenase 2
Database Link:	Entrez Gene 169355 Human Q6ZQW0



[View online »](#)

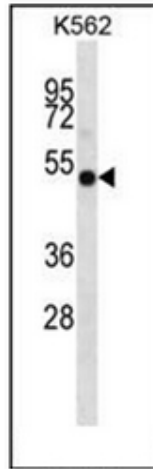
Background: Along with the enzymes encoded by the INDO (MIM 147435) and TDO2 (MIM 191070) genes, the enzyme encoded by the INDOL1 gene metabolizes tryptophan in the kynurenine pathway (Ball et al., 2007 [PubMed 17499941]).

Synonyms: INDOL1

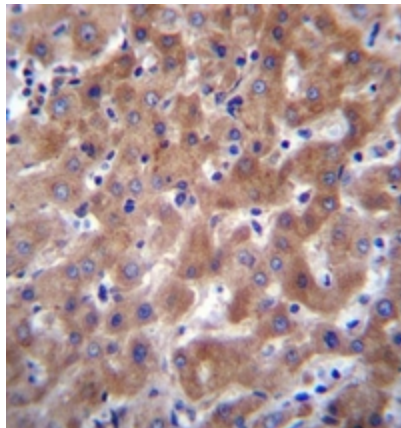
Note: **Molecular Weight:** 45424 Da

Protein Pathways: Metabolic pathways, Tryptophan metabolism

Product images:



Western blot analysis of IDO2 / INDOL1 Antibody (C-term) in K562 cell line lysates (35ug/lane).



Immunohistochemistry analysis in formalin fixed and paraffin embedded human liver tissue reacted with IDO2 / INDOL1 Antibody (C-term) followed by peroxidase conjugation of the secondary antibody and DAB staining.