

## Product datasheet for **AP52133PU-N**

### **HYAL2 (Center) Rabbit Polyclonal Antibody**

#### **Product data:**

Product Type:	Primary Antibodies
Applications:	IHC, WB
Recommended Dilution:	<b>ELISA:</b> 1/1000. <b>Western Blot:</b> 1/100-1/500. <b>Immunohistochemistry on Paraffin Sections:</b> 1/10-1/50.
Reactivity:	Human
Host:	Rabbit
Isotype:	Ig
Clonality:	Polyclonal
Immunogen:	KLH conjugated synthetic peptide between 127-157 amino acids from the Central region of Human HYAL2 / Hyaluronidase-2.
Specificity:	This antibody recognizes Human HYAL2 / Hyaluronidase-2 (Center).
Formulation:	PBS containing 0.09% (W/V) Sodium Azide as preservative State: Aff - Purified State: Liquid purified Ig fraction
Concentration:	lot specific
Purification:	Protein A column, followed by peptide affinity purification
Conjugation:	Unconjugated
Storage:	Store undiluted at 2-8°C for one month or (in aliquots) at -20°C for longer. Avoid repeated freezing and thawing.
Stability:	Shelf life: one year from despatch.
Gene Name:	hyaluronoglucosaminidase 2
Database Link:	<a href="#">Entrez Gene 8692 Human Q12891</a>



[View online »](#)

**Background:**

This gene encodes a weak acid-active hyaluronidase. The encoded protein is similar in structure to other more active hyaluronidases. Hyaluronidases degrade hyaluronan, one of the major glycosaminoglycans of the extracellular matrix. Hyaluronan and fragments of hyaluronan are thought to be involved in cell proliferation, migration and differentiation. Although it was previously thought to be a lysosomal hyaluronidase that is active at a pH below 4, the encoded protein is likely a GPI-anchored cell surface protein. This hyaluronidase serves as a receptor for the oncogenic virus Jaagsiekte sheep retrovirus. The gene is one of several related genes in a region of chromosome 3p21.3 associated with tumor suppression. This gene encodes two alternatively spliced transcript variants which differ only in the 5' UTR.

**Synonyms:**

LUCA2, Hyal-2, Hyaluronoglucosaminidase-2, Lung carcinoma protein 2

**Note:**

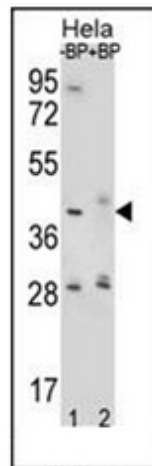
**Molecular Weight:** 53860 Da

**Protein Families:**

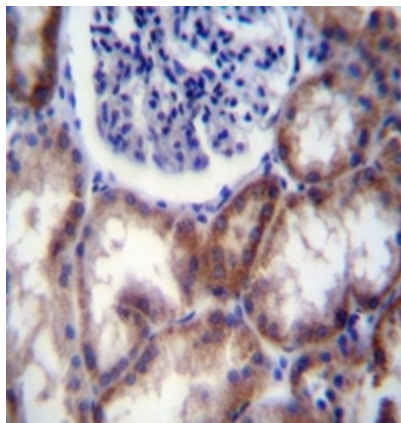
Druggable Genome

**Protein Pathways:**

Glycosaminoglycan degradation, Metabolic pathways

**Product images:**

Western blot analysis of HYAL2 / Hyaluronidase-2 Antibody (Center) pre-incubated without (lane 1) and with (lane 2) blocking peptide in HeLa cell line lysate. HYAL2 Antibody (Center) (arrow) was detected using the purified Pab (1:60/250 dilution).



Immunohistochemistry analysis in formalin fixed and paraffin embedded human kidney tissue reacted with HYAL2 / Hyaluronidase-2 Antibody (Center) followed by peroxidase conjugation of the secondary antibody and DAB staining.