

## Product datasheet for **AP52132PU-N**

### **HYAL1 (C-term) Rabbit Polyclonal Antibody**

#### **Product data:**

Product Type:	Primary Antibodies
Applications:	IHC, WB
Recommended Dilution:	<b>ELISA:</b> 1/1000. <b>Western Blot:</b> 1/100-1/500. <b>Immunohistochemistry on Paraffin Sections:</b> 1/10-1/50.
Reactivity:	Human
Host:	Rabbit
Isotype:	Ig
Clonality:	Polyclonal
Immunogen:	KLH conjugated synthetic peptide between 279-309 amino acids from the C-terminal region of Human HYAL1 / Hyaluronidase-1
Specificity:	This antibody recognizes Human HYAL1 / Hyaluronidase-1 (C-term).
Formulation:	PBS containing 0.09% (W/V) Sodium Azide as preservative State: Aff - Purified State: Liquid purified Ig fraction
Concentration:	lot specific
Purification:	Protein A column, followed by peptide affinity purification
Conjugation:	Unconjugated
Storage:	Store undiluted at 2-8°C for one month or (in aliquots) at -20°C for longer. Avoid repeated freezing and thawing.
Stability:	Shelf life: one year from despatch.
Gene Name:	hyaluronoglucosaminidase 1
Database Link:	<a href="#">Entrez Gene 3373 Human Q12794</a>



[View online »](#)

**Background:**

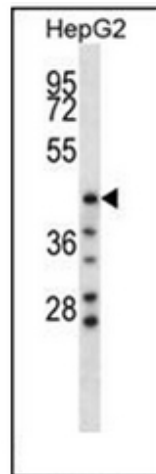
This gene encodes a lysosomal hyaluronidase. Hyaluronidases intracellularly degrade hyaluronan, one of the major glycosaminoglycans of the extracellular matrix. Hyaluronan is thought to be involved in cell proliferation, migration and differentiation. This enzyme is active at an acidic pH and is the major hyaluronidase in plasma. Mutations in this gene are associated with mucopolysaccharidosis type IX, or hyaluronidase deficiency. The gene is one of several related genes in a region of chromosome 3p21.3 associated with tumor suppression. Multiple transcript variants encoding different isoforms have been found for this gene.

**Synonyms:**

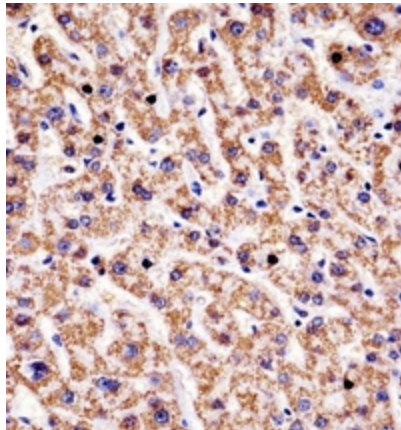
LUCA1, Hyal-1, Hyaluronoglucosaminidase-1, Lung carcinoma protein 1

**Note:**

**Molecular Weight:** 48368 Da

**Product images:**

Western blot analysis of HYAL1 / Hyaluronidase-1 Antibody (C-term) in HepG2 cell line lysates (35ug/lane). This demonstrates the HYAL1 antibody detected the HYAL1 protein (arrow).



Immunohistochemistry analysis in formalin fixed and paraffin embedded human liver tissue reacted with HYAL1 / Hyaluronidase-1 Antibody (C-term) followed by peroxidase conjugation of the secondary antibody and DAB staining.