

Product datasheet for **AP52119PU-N**

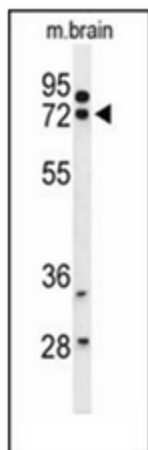
HSPA12A (Center) Rabbit Polyclonal Antibody

Product data:

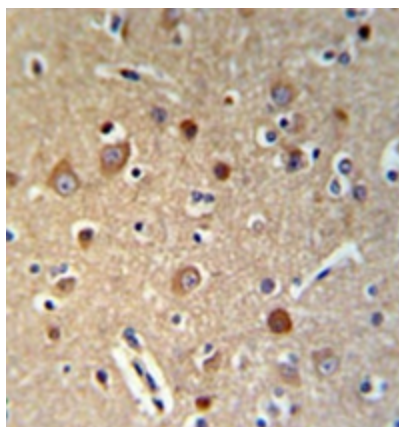
Product Type:	Primary Antibodies
Applications:	IHC, WB
Recommended Dilution:	ELISA: 1/1000. Western Blot: 1/100-1/500. Immunohistochemistry on Paraffin Sections: 1/50-1/100.
Reactivity:	Human, Mouse
Host:	Rabbit
Isotype:	Ig
Clonality:	Polyclonal
Immunogen:	KLH conjugated synthetic peptide between 405~435 amino acids from the Central region of human HSPA12A
Specificity:	This antibody recognizes Human and Mouse HSPA12A (Center).
Formulation:	PBS containing 0.09% (W/V) Sodium Azide as preservative State: Aff - Purified State: Liquid purified Ig fraction
Concentration:	lot specific
Purification:	Protein A column, followed by peptide affinity purification
Conjugation:	Unconjugated
Storage:	Store undiluted at 2-8°C for one month or (in aliquots) at -20°C for longer. Avoid repeated freezing and thawing.
Stability:	Shelf life: one year from despatch.
Gene Name:	heat shock protein family A (Hsp70) member 12A
Database Link:	Entrez Gene 73442 Mouse Entrez Gene 259217 Human O43301
Synonyms:	KIAA0417
Note:	Molecular Weight: 74978 Da



[View online »](#)

Product images:

Western blot analysis of HSPA12A Antibody (Center) in mouse brain tissue lysates (35ug/lane). HSPA12A (arrow) was detected using the purified Pab.



Immunohistochemistry analysis in formalin fixed and paraffin embedded brain tissue reacted with HSPA12A Antibody (Center) peroxidase conjugated to the secondary antibody and followed by DAB staining.