

Product datasheet for **AP52115PU-N**

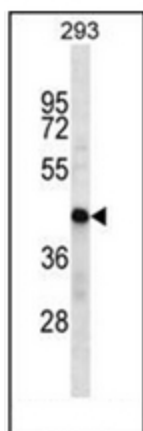
HSDL2 (Center) Rabbit Polyclonal Antibody

Product data:

Product Type:	Primary Antibodies
Applications:	WB
Recommended Dilution:	ELISA: 1/1000. Western Blot: 1/100-1/500.
Reactivity:	Human
Host:	Rabbit
Isotype:	Ig
Clonality:	Polyclonal
Immunogen:	KLH conjugated synthetic peptide between 228-258 amino acids from the Central region of human HSDL2
Specificity:	This antibody recognizes Human HSDL2 (Center).
Formulation:	PBS containing 0.09% (W/V) Sodium Azide as preservative State: Aff - Purified State: Liquid purified Ig fraction
Concentration:	lot specific
Purification:	Protein A column, followed by peptide affinity purification
Conjugation:	Unconjugated
Storage:	Store undiluted at 2-8°C for one month or (in aliquots) at -20°C for longer. Avoid repeated freezing and thawing.
Stability:	Shelf life: one year from despatch.
Gene Name:	hydroxysteroid dehydrogenase like 2
Database Link:	Entrez Gene 84263 Human Q6YN16
Background:	HSDL2 has apparently no steroid dehydrogenase activity.
Synonyms:	C9orf99
Note:	Molecular Weight: 45395 Da
Protein Families:	Druggable Genome



[View online »](#)

Product images:

Western blot analysis of HSDL2 Antibody (Center) in 293 cell line lysates (35ug/lane). This demonstrates the HSDL2 antibody detected the HSDL2 protein (arrow).