

Product datasheet for **AP52111PU-N**

HSD17B3 (Center) Rabbit Polyclonal Antibody

Product data:

Product Type:	Primary Antibodies
Applications:	FC, IHC, WB
Recommended Dilution:	ELISA: 1/1000. Western Blot: 1/100-1/500. Flow Cytometry: 1/10-1/50. Immunohistochemistry on Paraffin Sections: 1/50-1/100.
Reactivity:	Human
Host:	Rabbit
Isotype:	Ig
Clonality:	Polyclonal
Immunogen:	KLH conjugated synthetic peptide between 96~126 amino acids from the Central region of human 17-beta-HSD3 / HSD17B3
Specificity:	This antibody recognizes Human 17-beta-HSD3 / HSD17B3 (Center).
Formulation:	PBS containing 0.09% (W/V) Sodium Azide as preservative State: Aff - Purified State: Liquid purified Ig fraction
Concentration:	lot specific
Purification:	Protein A column, followed by peptide affinity purification
Conjugation:	Unconjugated
Storage:	Store undiluted at 2-8°C for one month or (in aliquots) at -20°C for longer. Avoid repeated freezing and thawing.
Stability:	Shelf life: one year from despatch.
Gene Name:	hydroxysteroid (17-beta) dehydrogenase 3
Database Link:	Entrez Gene 3293 Human P37058
Background:	This isoform of 17 beta-hydroxysteroid dehydrogenase is expressed predominantly in the testis and catalyzes the conversion of androstenedione to testosterone. It preferentially uses NADP as cofactor. Deficiency can result in male pseudohermaphroditism with gynecomastia.



[View online »](#)

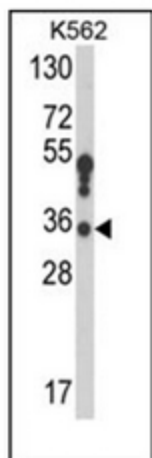
Synonyms: Testicular 17-beta-hydroxysteroid dehydrogenase, EDH17B3

Note: **Molecular Weight:** 34516 Da

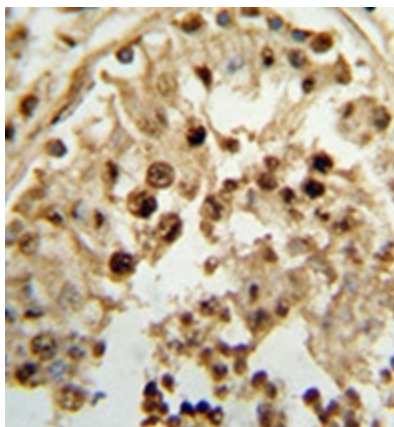
Protein Families: Druggable Genome, Transmembrane

Protein Pathways: Androgen and estrogen metabolism, Metabolic pathways

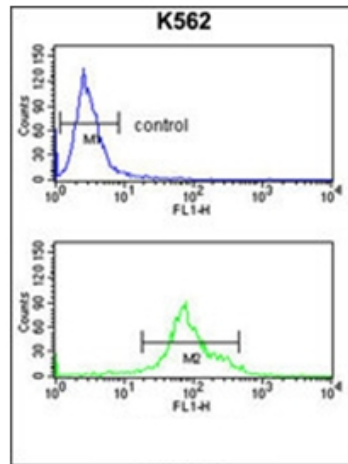
Product images:



Western blot analysis of 17-beta-HSD3 / HSD17B3 Antibody (Center) in K562 cell line lysates (35ug/lane). HSD17B3 (arrow) was detected using the purified Pab.



Immunohistochemistry analysis in formalin-fixed and paraffin-embedded human testis tissue reacted with 17-beta-HSD3 / HSD17B3 Antibody (Center), which was peroxidase conjugated to the secondary antibody, followed by DAB staining.



Flow cytometry analysis of K562 cells using 17-beta-HSD3 / HSD17B3 Antibody (Center) (bottom histogram) compared to a negative control cell (top histogram). FITC-conjugated goat-anti-rabbit secondary antibodies were used for the analysis.