

Product datasheet for **AP52110PU-N**

HSD17B12 (Center) Rabbit Polyclonal Antibody

Product data:

Product Type:	Primary Antibodies
Applications:	FC, IHC, WB
Recommended Dilution:	ELISA: 1/1000. Western Blot: 1/100-1/500. Flow Cytometry: 1/10-1/50. Immunohistochemistry on Paraffin Sections: 1/50-1/100.
Reactivity:	Human
Host:	Rabbit
Isotype:	Ig
Clonality:	Polyclonal
Immunogen:	KLH conjugated synthetic peptide between 133~163 amino acids from the Center region of human 17-beta-HSD12 / HSD17B12
Specificity:	This antibody recognizes Human 17-beta-HSD12 / HSD17B12 (Center).
Formulation:	PBS containing 0.09% (W/V) Sodium Azide as preservative State: Aff - Purified State: Liquid purified Ig fraction
Concentration:	lot specific
Purification:	Protein A column, followed by peptide affinity purification
Conjugation:	Unconjugated
Storage:	Store undiluted at 2-8°C for one month or (in aliquots) at -20°C for longer. Avoid repeated freezing and thawing.
Stability:	Shelf life: one year from despatch.
Gene Name:	hydroxysteroid (17-beta) dehydrogenase 12
Database Link:	Entrez Gene 51144 Human Q53GQ0
Background:	The enzyme 17-beta hydroxysteroid dehydrogenase-12 (HSD17B12) uses NADPH to reduce 3-ketoacyl-CoA to 3-hydroxyacyl-CoA during the second step of fatty acid elongation.
Synonyms:	17-beta-hydroxysteroid dehydrogenase 12, 3-ketoacyl-CoA reductase, KAR



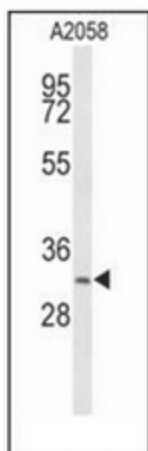
[View online »](#)

Note: **Molecular Weight:** 34324 Da

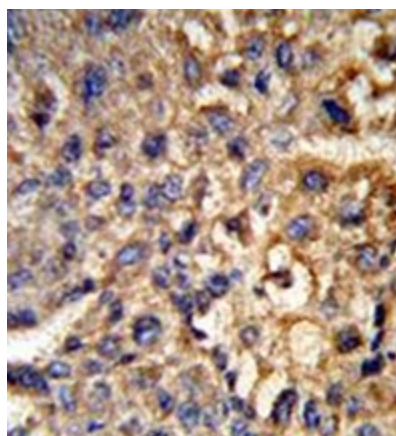
Protein Families: Druggable Genome, Transmembrane

Protein Pathways: Androgen and estrogen metabolism, Biosynthesis of unsaturated fatty acids, Metabolic pathways

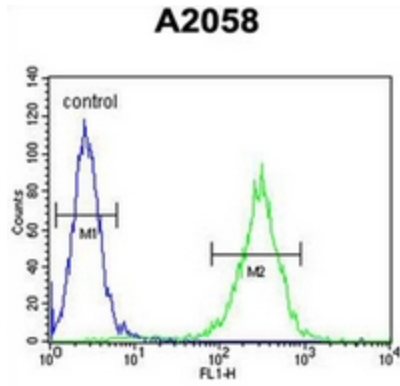
Product images:



Western blot analysis of 17-beta-HSD12 / HSD17B12 Antibody (Center) in A2058 cell line lysates (35ug/lane). HSD17B12 (arrow) was detected using the purified Pab.



Formalin-fixed and paraffin-embedded human hepatocarcinoma reacted with 17-beta-HSD12 / HSD17B12 Antibody (Center), which was peroxidase-conjugated to the secondary antibody, followed by DAB staining.



Flow cytometric analysis of A2058 cells using 17-beta-HSD12 / HSD17B12 Antibody (Center) (right histogram) compared to a negative control cell (left histogram). FITC-conjugated goat-anti-rabbit secondary antibodies were used for the analysis.