

## Product datasheet for **AP52108PU-N**

### **HSD17B1 (C-term) Rabbit Polyclonal Antibody**

#### Product data:

Product Type:	Primary Antibodies
Applications:	WB
Recommended Dilution:	<b>ELISA:</b> 1/1000. <b>Western Blot:</b> 1/100-1/500.
Reactivity:	Human
Host:	Rabbit
Isotype:	Ig
Clonality:	Polyclonal
Immunogen:	KLH conjugated synthetic peptide between 226-256 amino acids from the C-terminal region of human 17-beta-HSD1 / HSD17B1
Specificity:	This antibody recognizes Human 17-beta-HSD1 / HSD17B1 (C-term).
Formulation:	PBS containing 0.09% (W/V) Sodium Azide as preservative State: Aff - Purified State: Liquid purified Ig fraction
Concentration:	lot specific
Purification:	Protein A column, followed by peptide affinity purification
Conjugation:	Unconjugated
Storage:	Store undiluted at 2-8°C for one month or (in aliquots) at -20°C for longer. Avoid repeated freezing and thawing.
Stability:	Shelf life: one year from despatch.
Gene Name:	hydroxysteroid (17-beta) dehydrogenase 1
Database Link:	<a href="#">Entrez Gene 3292 Human P14061</a>
Background:	Favors the reduction of estrogens and androgens. Also has 20-alpha-HSD activity. Uses preferentially NADH.
Synonyms:	20 alpha-hydroxysteroid dehydrogenase, 20-alpha HSD, 17E2DH, EDH17B1, EDH17B2, EDHB17, E17KSR



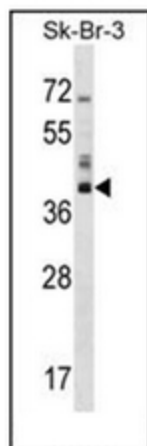
[View online »](#)

**Note:** **Molecular Weight:** 34950 Da

**Protein Families:** Druggable Genome

**Protein Pathways:** Androgen and estrogen metabolism, Metabolic pathways

**Product images:**



Western blot analysis of HSD17B1 Antibody (C-term) in SK-BR-3 cell line lysates (35ug/lane). This demonstrates the HSD17B1 antibody detected the HSD17B1 protein (arrow).