

## Product datasheet for **AP52100PU-N**

### **PGEA1 (CBY1) (C-term) Rabbit Polyclonal Antibody**

#### **Product data:**

Product Type:	Primary Antibodies
Applications:	FC, IHC, WB
Recommended Dilution:	<b>ELISA:</b> 1/1000. <b>Western Blot:</b> 1/100-1/500. <b>Flow Cytometry:</b> 1/10-1/50. <b>Immunohistochemistry on Paraffin Sections:</b> 1/50-1/100.
Reactivity:	Human
Host:	Rabbit
Isotype:	Ig
Clonality:	Polyclonal
Immunogen:	KLH conjugated synthetic peptide between 97~126 amino acids from the C-terminal region of human CBY1
Specificity:	This antibody recognizes Human CBY1 (C-term).
Formulation:	PBS containing 0.09% (W/V) Sodium Azide as preservative State: Aff - Purified State: Liquid purified Ig fraction
Concentration:	lot specific
Purification:	Protein A column, followed by peptide affinity purification
Conjugation:	Unconjugated
Storage:	Store undiluted at 2-8°C for one month or (in aliquots) at -20°C for longer. Avoid repeated freezing and thawing.
Stability:	Shelf life: one year from despatch.
Gene Name:	chibby homolog 1 (Drosophila)
Database Link:	<a href="#">Entrez Gene 25776 Human Q9Y3M2</a>



[View online »](#)

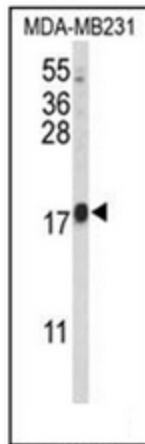
**Background:** Inhibits the Wnt/Wingless pathway by binding to beta catenin and inhibiting beta catenin mediated transcriptional activation by competing with TCF/LEF transcription factors. Has also been shown to play a role in regulating the intracellular trafficking of polycystin 2/PKD2 and possibly of other intracellular proteins.

**Synonyms:** Protein chibby homolog 1, PKD2 interactor, PIGEA-14, ARB1, C22orf2, CBY, PGEA1, HRIHFB2025, ARPP-binding protein

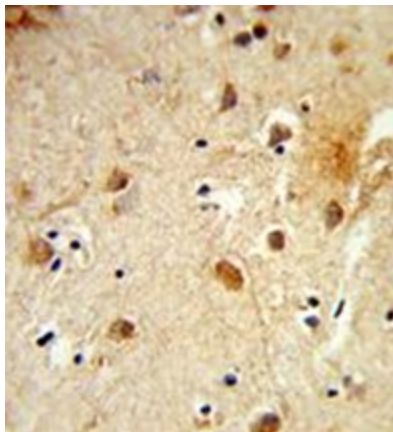
**Note:** **Molecular Weight:** 14470 Da

**Protein Families:** Transcription Factors

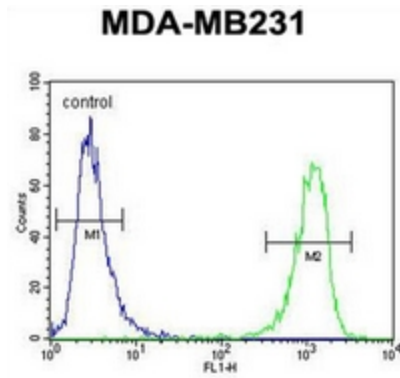
**Product images:**



Western blot analysis of CBY1 Antibody (C-term) in MDA-MB231 cell line lysates (35ug/lane).



Formalin-fixed and paraffin-embedded human brain tissue reacted with CBY1 Antibody (C-term), which was peroxidase-conjugated to the secondary antibody, followed by DAB staining.



Flow cytometric analysis of MDA-MB231 cells using CBY1 Antibody (C-term) (right histogram) compared to a negative control cell (left histogram). FITC-conjugated goat-anti-rabbit secondary antibodies were used for the analysis.