

## Product datasheet for **AP52098PU-N**

### HRC (Center) Rabbit Polyclonal Antibody

#### Product data:

Product Type:	Primary Antibodies
Applications:	IHC, WB
Recommended Dilution:	<b>ELISA:</b> 1/1000. <b>Western Blot:</b> 1/100-1/500. <b>Immunohistochemistry on Paraffin Sections:</b> 1/10-1/50.
Reactivity:	Human
Host:	Rabbit
Isotype:	Ig
Clonality:	Polyclonal
Immunogen:	KLH conjugated synthetic peptide between 284-314 amino acids from the Central region of human HRC / HCP
Specificity:	This antibody recognizes Human HRC / HCP (Center).
Formulation:	PBS containing 0.09% (W/V) Sodium Azide as preservative State: Aff - Purified State: Liquid purified Ig fraction
Concentration:	lot specific
Purification:	Protein A column, followed by peptide affinity purification
Conjugation:	Unconjugated
Storage:	Store undiluted at 2-8°C for one month or (in aliquots) at -20°C for longer. Avoid repeated freezing and thawing.
Stability:	Shelf life: one year from despatch.
Gene Name:	histidine rich calcium binding protein
Database Link:	<a href="#">Entrez Gene 3270 Human P23327</a>
Background:	This gene encodes a luminal sarcoplasmic reticulum protein identified by its ability to bind low-density lipoprotein with high affinity. The protein interacts with the cytoplasmic domain of triadin, the main transmembrane protein of the junctional sarcoplasmic reticulum (SR) of skeletal muscle. The protein functions in the regulation of releasable calcium into the SR.

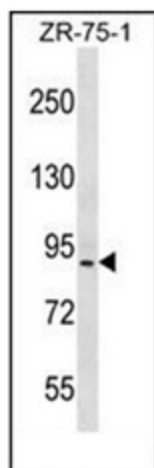


[View online »](#)

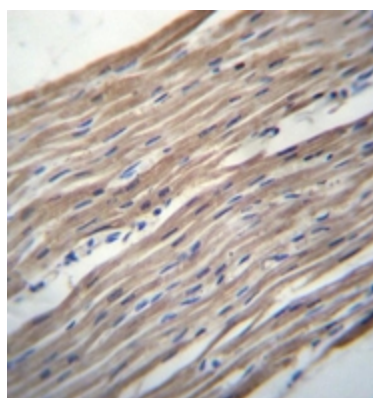
Synonyms: HCP; MGC133236

Note: **Molecular Weight:** 80244 Da

### Product images:



Western blot analysis of HRC / HCR Antibody (Center) in ZR-75-1 cell line lysates (35ug/lane). This demonstrates the HRC antibody detected the HRC protein (arrow).



Immunohistochemistry analysis in formalin fixed and paraffin embedded human heart tissue reacted with HRC / HCR Antibody (Center), which was peroxidase conjugated to the secondary antibody and followed by DAB staining.