

Product datasheet for **AP52095PU-N**

HPSE2 (C-term) Rabbit Polyclonal Antibody

Product data:

Product Type:	Primary Antibodies
Applications:	IHC, WB
Recommended Dilution:	ELISA: 1/1000. Western Blot: 1/100-1/500. Immunohistochemistry on Paraffin Sections: 1/10-1/50.
Reactivity:	Human
Host:	Rabbit
Isotype:	Ig
Clonality:	Polyclonal
Immunogen:	KLH conjugated synthetic peptide between 450-480 amino acids from the C-terminal region of human Heparanase-2 / HPA2
Specificity:	This antibody recognizes Human Heparanase-2 / HPA2 (C-term).
Formulation:	PBS containing 0.09% (W/V) Sodium Azide as preservative State: Aff - Purified State: Liquid purified Ig fraction
Concentration:	lot specific
Purification:	Protein A column, followed by peptide affinity purification
Conjugation:	Unconjugated
Storage:	Store undiluted at 2-8°C for one month or (in aliquots) at -20°C for longer. Avoid repeated freezing and thawing.
Stability:	Shelf life: one year from despatch.
Gene Name:	heparanase 2 (inactive)
Database Link:	Entrez Gene 60495 Human Q8WWQ2



[View online »](#)

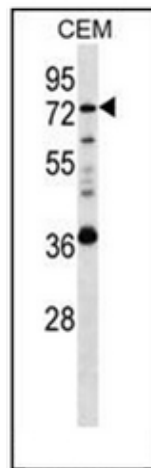
Background: Endoglycosidase which is a cell surface and extracellular matrix-degrading enzyme. Cleaves heparan sulfate proteoglycans (HSPGs) into heparan sulfate side chains and core proteoglycans. Also implicated in the extravasation of leukocytes and tumor cell lines. Due to its contribution to metastasis and angiogenesis, it is considered to be a potential target for anti-cancer therapies.

Synonyms: HPSE2

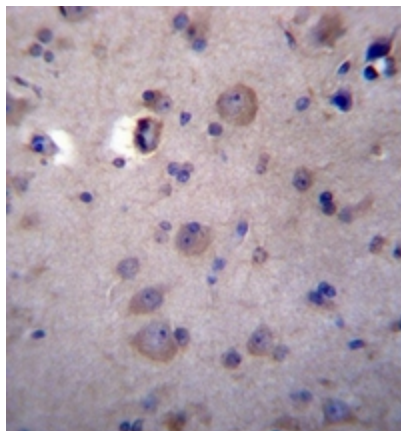
Note: **Molecular Weight:** 66596 Da

Protein Pathways: Glycosaminoglycan degradation, Metabolic pathways

Product images:



Western blot analysis of Heparanase-2 / HPA2 Antibody (C-term) in CEM cell line lysates (35ug/lane). This demonstrates the HPSE2 antibody detected the HPSE2 protein (arrow).



Immunohistochemistry analysis in formalin fixed and paraffin embedded human brain tissue reacted with Heparanase-2 / HPA2 Antibody (C-term) followed by peroxidase conjugation of the secondary antibody and DAB staining.