

## Product datasheet for **AP52093PU-N**

### HPR (Center) Rabbit Polyclonal Antibody

#### Product data:

Product Type:	Primary Antibodies
Applications:	IHC, WB
Recommended Dilution:	<b>ELISA:</b> 1/1000. <b>Western Blot:</b> 1/100-1/500. <b>Immunohistochemistry on Paraffin Sections:</b> 1/50-1/100.
Reactivity:	Human
Host:	Rabbit
Isotype:	Ig
Clonality:	Polyclonal
Immunogen:	KLH conjugated synthetic peptide between 219-247 amino acids from the Central region of human HPR.
Specificity:	This antibody recognizes Human HPR (Center).
Formulation:	PBS containing 0.09% (W/V) Sodium Azide as preservative State: Aff - Purified State: Liquid purified Ig fraction
Concentration:	lot specific
Purification:	Protein A column, followed by peptide affinity purification
Conjugation:	Unconjugated
Storage:	Store undiluted at 2-8°C for one month or (in aliquots) at -20°C for longer. Avoid repeated freezing and thawing.
Stability:	Shelf life: one year from despatch.
Gene Name:	haptoglobin-related protein
Database Link:	<a href="#">Entrez Gene 3250 Human P00739</a>
Background:	Ubiquitous transcription factor required for a diverse set of processes. It is a component of the CCR4 complex involved in the control of gene expression (By similarity).
Synonyms:	Haptoglobin-related protein

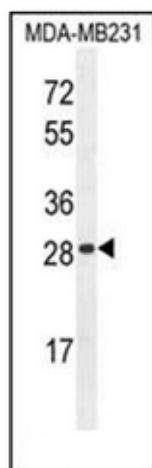


[View online »](#)

Note: **Molecular Weight:** 39030 Da

Protein Families: Druggable Genome, Protease, Secreted Protein

### Product images:



Western blot analysis of HPR Antibody (Center) in MDA-MB231 cell line lysates (35ug/lane). This demonstrates the HPR antibody detected the HPR protein (arrow).

