

Product datasheet for **AP52089PU-N**

Haptoglobin (HP) (Center) Rabbit Polyclonal Antibody

Product data:

Product Type:	Primary Antibodies
Applications:	FC, IF, IHC, WB
Recommended Dilution:	Western Blot: ~ 1/1000. Flow Cytometry: 1/10-1/50. Immunofluorescence: 1/10-1/50. Immunohistochemistry on Paraffin Sections: 1/50-1/100.
Reactivity:	Human
Host:	Rabbit
Isotype:	Ig
Clonality:	Polyclonal
Immunogen:	KLH conjugated synthetic peptide between 296-322 amino acids from the Central region of Human Haptoglobin
Specificity:	This antibody recognizes Human Haptoglobin (Center).
Formulation:	PBS containing 0.09% (W/V) Sodium Azide as preservative State: Aff - Purified State: Liquid purified Ig fraction
Concentration:	lot specific
Purification:	Protein A column, followed by peptide affinity purification
Conjugation:	Unconjugated
Storage:	Store undiluted at 2-8°C for one month or (in aliquots) at -20°C for longer. Avoid repeated freezing and thawing.
Stability:	Shelf life: one year from despatch.
Gene Name:	haptoglobin
Database Link:	Entrez Gene 3240 Human P00738



[View online »](#)

Background:

This gene encodes a preproprotein, which is processed to yield both alpha and beta chains, which subsequently combine as a tetramer to produce haptoglobin. Haptoglobin functions to bind free plasma hemoglobin, which allows degradative enzymes to gain access to the hemoglobin, while at the same time preventing loss of iron through the kidneys and protecting the kidneys from damage by hemoglobin. Mutations in this gene and/or its regulatory regions cause ahaptoglobinemia or hypohaptoglobinemia. This gene has also been linked to diabetic nephropathy, the incidence of coronary artery disease in type 1 diabetes, Crohn's disease, inflammatory disease behavior, primary sclerosing cholangitis, susceptibility to idiopathic Parkinson's disease, and a reduced incidence of Plasmodium falciparum malaria. A similar duplicated gene is located next to this gene on chromosome 16. Multiple transcript variants encoding different isoforms have been found for this gene.

Synonyms:

BP; haptoglobin; HP2-ALPHA-2; HPA1S; MGC111141

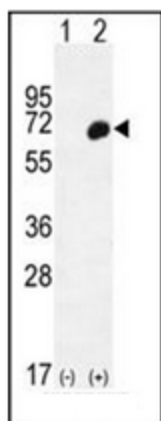
Note:

Molecular Weight: 45205 Da

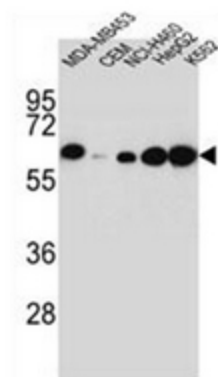
Protein Families:

Druggable Genome, Protease, Secreted Protein, Transmembrane

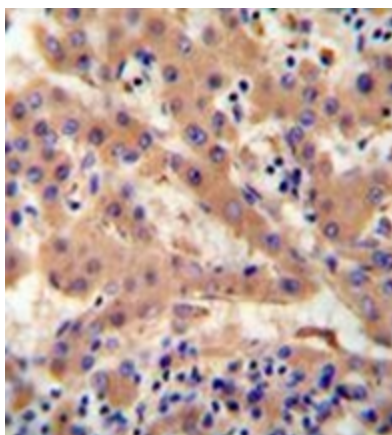
Product images:



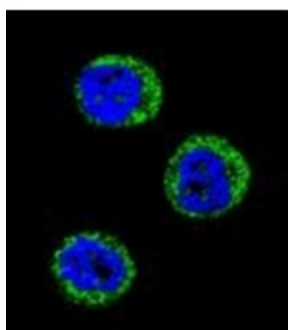
Western blot analysis of HP (arrow) using Haptoglobin Antibody (Center). 293 cell lysates (2 ug/lane) either nontransfected (Lane 1) or transiently transfected (Lane 2) with the HP gene.



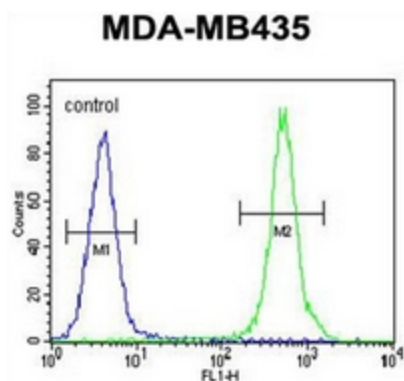
Western blot analysis of Haptoglobin Antibody (Center) in MDA-MB453, CEM, NCI-H460, HepG2, K562 cell line lysates (35ug/lane). This demonstrates the HP antibody detected the HP protein (arrow).



Immunohistochemistry analysis in formalin fixed and paraffin embedded human hepatocarcinoma reacted with Haptoglobin Antibody (Center) followed by peroxidase conjugation of the secondary antibody and DAB staining.



Confocal immunofluorescent analysis of Haptoglobin Antibody (Center) with MDA-MB435 cell followed by Alexa Fluor 488-conjugated goat anti-rabbit IgG (green). DAPI was used to stain the cell nuclear (blue).



Flow cytometric analysis of MDA-MB435 cells using Haptoglobin Antibody (Center) (right histogram) compared to a negative control cell (left histogram). FITC-conjugated goat-anti-rabbit secondary antibodies were used for the analysis.