

## Product datasheet for **AP52081PU-N**

### HOXB9 (Center) Rabbit Polyclonal Antibody

#### Product data:

|                       |  |
|-----------------------|--|
| Product Type:         | Primary Antibodies   |
| Applications:         | WB   |
| Recommended Dilution: | <b>ELISA:</b> 1/1000.<br><b>Western Blot:</b> 1/100-1/500.   |
| Reactivity:           | Human  |
| Host:                 | Rabbit   |
| Isotype:              | Ig   |
| Clonality:            | Polyclonal   |
| Immunogen:            | KLH conjugated synthetic peptide between 147-176 amino acids from the Central region of Human HOXB9  |
| Specificity:          | This antibody recognizes Human HOXB9 / HOX2E (Center).   |
| Formulation:          | PBS containing 0.09% (W/V) Sodium Azide as preservative<br>State: Aff - Purified<br>State: Liquid purified Ig fraction   |
| Concentration:        | lot specific   |
| Purification:         | Protein A column, followed by peptide affinity purification  |
| Conjugation:          | Unconjugated   |
| Storage:              | Store undiluted at 2-8°C for one month or (in aliquots) at -20°C for longer.<br>Avoid repeated freezing and thawing.   |
| Stability:            | Shelf life: one year from despatch.  |
| Gene Name:            | homeobox B9  |
| Database Link:        | <a href="#">Entrez Gene 3219 Human P17482</a>  |
| Background:           | HOXB9 is a member of the Abd-B homeobox family and encodes a protein with a homeobox DNA-binding domain. It is included in a cluster of homeobox B genes located on chromosome 17. The encoded nuclear protein functions as a sequence-specific transcription factor that is involved in cell proliferation and differentiation. Increased expression of this gene is associated with some cases of leukemia, prostate cancer and lung cancer. |



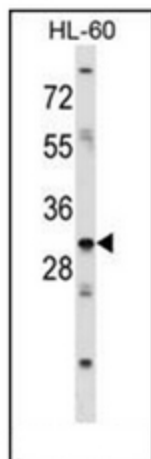
[View online »](#)

**Synonyms:** Homeobox protein Hox-B9, Hox-2E, Hox-2.5

**Note:** **Molecular Weight:** 28059 Da

**Protein Families:** Transcription Factors

**Product images:**



Western blot analysis of HOXB9 / HOX2E Antibody (Center) in HL-60 cell line lysates (35ug/lane). This demonstrates the HOXB9 antibody detected the HOXB9 protein (arrow).