

Product datasheet for **AP52080PU-N**

HOXB8 (C-term) Rabbit Polyclonal Antibody

Product data:

Product Type:	Primary Antibodies
Applications:	WB
Recommended Dilution:	ELISA: 1/1000. Western Blot: 1/100-1/500.
Reactivity:	Human
Host:	Rabbit
Isotype:	Ig
Clonality:	Polyclonal
Immunogen:	KLH conjugated synthetic peptide between 214-243 amino acids from the C-terminal region of human HOXB8
Specificity:	This antibody recognizes Human HOXB8 / HOX2D (C-term).
Formulation:	PBS containing 0.09% (W/V) Sodium Azide as preservative State: Aff - Purified State: Liquid purified Ig fraction
Concentration:	lot specific
Purification:	Protein A column, followed by peptide affinity purification
Conjugation:	Unconjugated
Storage:	Store undiluted at 2-8°C for one month or (in aliquots) at -20°C for longer. Avoid repeated freezing and thawing.
Stability:	Shelf life: one year from despatch.
Gene Name:	homeobox B8
Database Link:	Entrez Gene 3218 Human P17481



[View online »](#)

Background:

This gene is a member of the Antp homeobox family and encodes a nuclear protein with a homeobox DNA-binding domain. It is included in a cluster of homeobox B genes located on chromosome 17. The encoded protein functions as a sequence-specific transcription factor that is involved in development. Increased expression of this gene is associated with colorectal cancer. Mice that have had the murine ortholog of this gene knocked out exhibit an excessive pathologic grooming behavior. This behavior is similar to the behavior of humans suffering from the obsessive-compulsive spectrum disorder trichotillomania.

Synonyms:

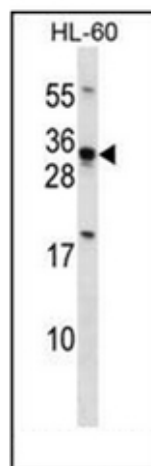
Homeobox protein Hox-B8, Hox-2D, Hox-2.4

Note:

Molecular Weight: 27574 Da

Protein Families:

ES Cell Differentiation/IPS

Product images:

Western blot analysis of HOXB8 / HOX2D Antibody (C-term) -Nio in HL-60 cell line lysates (35ug/lane). This demonstrates the HOXB8 antibody detected the HOXB8 protein (arrow).