

Product datasheet for **AP52075PU-N**

HOXA3 (C-term) Rabbit Polyclonal Antibody

Product data:

Product Type:	Primary Antibodies
Applications:	FC, IHC, WB
Recommended Dilution:	ELISA: 1/1000. Western Blot: 1/1000. Flow Cytometry: 1/10-1/50. Immunohistochemistry on Paraffin Sections: 1/100.
Reactivity:	Human
Host:	Rabbit
Isotype:	Ig
Clonality:	Polyclonal
Immunogen:	KLH conjugated synthetic peptide between 413-440 amino acids from the C-terminal region of Human HOXA3 / HOX1E
Specificity:	This antibody recognizes Human HOXA3 / HOX1E (C-term).
Formulation:	PBS containing 0.09% (W/V) Sodium Azide as preservative State: Aff - Purified State: Liquid purified Ig fraction
Concentration:	lot specific
Purification:	Protein A column, followed by peptide affinity purification
Conjugation:	Unconjugated
Storage:	Store undiluted at 2-8°C for one month or (in aliquots) at -20°C for longer. Avoid repeated freezing and thawing.
Stability:	Shelf life: one year from despatch.
Gene Name:	homeobox A3
Database Link:	Entrez Gene 3200 Human O43365



[View online »](#)

Background:

In vertebrates, the genes encoding the class of transcription factors called homeobox genes are found in clusters named A, B, C, and D on four separate chromosomes. Expression of these proteins is spatially and temporally regulated during embryonic development. This gene is part of the A cluster on chromosome 7 and encodes a DNA-binding transcription factor which may regulate gene expression, morphogenesis, and differentiation.

Synonyms:

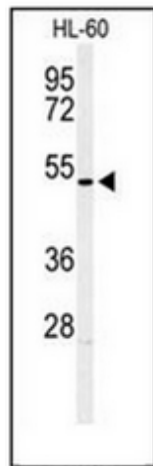
Homeobox protein Hox-A3, Hox-1E

Note:

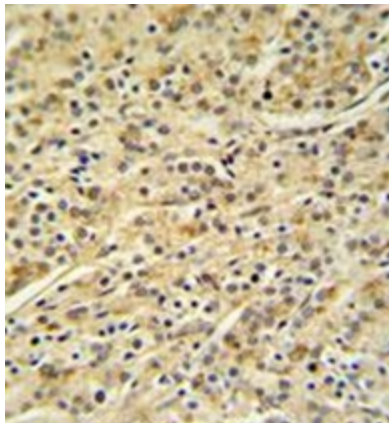
Molecular Weight: 46369 Da

Protein Families:

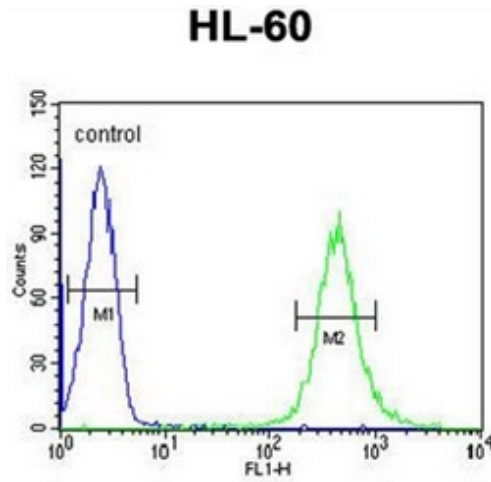
Transcription Factors

Product images:

Western blot analysis of HOXA3 / HOX1E Antibody (C-term) in HL-60 cell line lysates (35ug/lane). HOXA3 (arrow) was detected using the purified Pab.



Immunohistochemistry analysis in formalin fixed and paraffin embedded prostate carcinoma reacted with HOXA3 / HOX1E Antibody (C-term) by followed peroxidase conjugation of the secondary antibody and DAB staining.



Flow cytometric analysis of HL-60 cells using HOXA3 / HOX1E Antibody (C-term) (right histogram) compared to a negative control cell (left histogram). FITC-conjugated goat-anti-rabbit secondary antibodies were used for the analysis.