

Product datasheet for **AP52073PU-N**

HOXA10 (Center) Rabbit Polyclonal Antibody

Product data:

Product Type:	Primary Antibodies
Applications:	IF, WB
Recommended Dilution:	ELISA: 1/1000. Western Blot: 1/100-1/500. Immunofluorescence: 1/10-1/50.
Reactivity:	Human
Host:	Rabbit
Isotype:	Ig
Clonality:	Polyclonal
Immunogen:	KLH conjugated synthetic peptide between 234-262 amino acids from the Central region of human HOXA10
Specificity:	This antibody recognizes Human HOXA10 (Center).
Formulation:	PBS containing 0.09% (W/V) Sodium Azide as preservative State: Aff - Purified State: Liquid purified Ig fraction
Concentration:	lot specific
Purification:	Protein A column, followed by peptide affinity purification
Conjugation:	Unconjugated
Storage:	Store undiluted at 2-8°C for one month or (in aliquots) at -20°C to -80°C for longer. Avoid repeated freezing and thawing.
Stability:	Shelf life: one year from despatch.
Gene Name:	homeobox A10
Database Link:	Entrez Gene 3206 Human P31260



[View online »](#)

Background:

In vertebrates, the genes encoding the class of transcription factors called homeobox genes are found in clusters named A, B, C, and D on four separate chromosomes. Expression of these proteins is spatially and temporally regulated during embryonic development. This gene is part of the A cluster on chromosome 7 and encodes a DNA-binding transcription factor that may regulate gene expression, morphogenesis, and differentiation. More specifically, it may function in fertility, embryo viability, and regulation of hematopoietic lineage commitment. Alternatively spliced transcript variants encoding different isoforms have been described.

Synonyms:

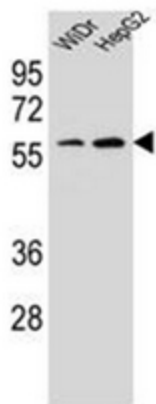
Homeobox protein Hox-A10, Hox-1H, Hox-1.8, PL

Note:

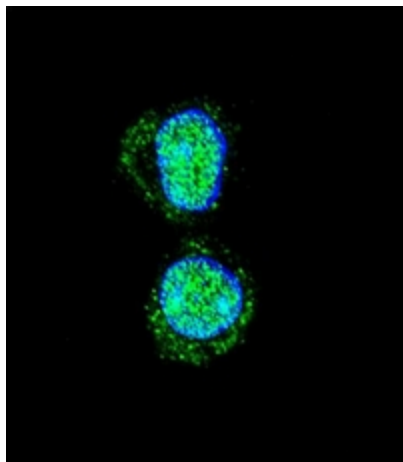
Molecular Weight: 42414 Da

Protein Families:

Transcription Factors

Product images:


Western blot analysis of HOXA10 / HOX1H Antibody (Center) in WiDr, HepG2 cell line lysates (35ug/lane). This demonstrates the HOXA10 antibody detected the HOXA10 protein (arrow).



Confocal immunofluorescent analysis of HOXA10 / HOX1H Antibody (Center) with HepG2 cell followed by Alexa Fluor 488-conjugated goat anti-rabbit IgG (green). DAPI was used to stain the cell nuclear (blue).