

Product datasheet for **AP52072PU-N**

HOPX (C-term) Rabbit Polyclonal Antibody

Product data:

Product Type:	Primary Antibodies
Applications:	FC, WB
Recommended Dilution:	ELISA: 1/1000. Western Blot: 1/100-1/500. Flow Cytometry: 1/10-1/50.
Reactivity:	Human
Host:	Rabbit
Isotype:	Ig
Clonality:	Polyclonal
Immunogen:	KLH conjugated synthetic peptide between 46-73 amino acids from the C-terminal region of human Homeodomain-only protein / HOP
Specificity:	This antibody recognizes Human Homeodomain-only protein / HOP (C-term).
Formulation:	PBS containing 0.09% (W/V) Sodium Azide as preservative State: Aff - Purified State: Liquid purified Ig fraction
Concentration:	lot specific
Purification:	Protein A column, followed by peptide affinity purification
Conjugation:	Unconjugated
Storage:	Store undiluted at 2-8°C for one month or (in aliquots) at -20°C for longer. Avoid repeated freezing and thawing.
Stability:	Shelf life: one year from despatch.
Gene Name:	HOP homeobox
Database Link:	Entrez Gene 84525 Human Q9BPY8



[View online »](#)

Background:

The protein encoded by this gene is a homeodomain protein that lacks certain conserved residues required for DNA binding. It was reported that choriocarcinoma cell lines and tissues failed to express this gene, which suggested the possible involvement of this gene in malignant conversion of placental trophoblasts. Studies in mice suggest that this protein may interact with serum response factor (SRF) and modulate SRF-dependent cardiac-specific gene expression and cardiac development. Multiple alternatively spliced transcript variants have been identified for this gene. [provided by RefSeq].

Synonyms:

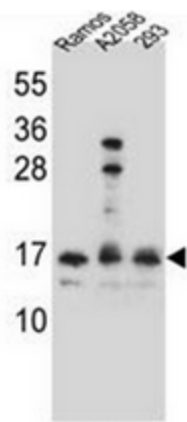
Lung cancer-associated Y protein, Odd homeobox protein 1, HOPX, HOD, LAGY, NECC1, OB1

Note:

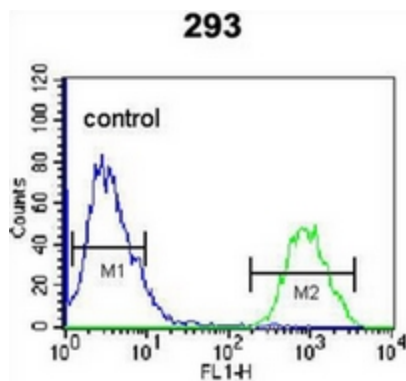
Molecular Weight: 8260 Da

Protein Families:

Transcription Factors

Product images:


Western blot analysis of Homeodomain-only protein / HOP Antibody in Ramos, A2058, 293 cell line lysates (35ug/lane). This demonstrates the HOPX antibody detected the HOPX protein (arrow).



Flow cytometric analysis of 293 cells using Homeodomain-only protein / HOP Antibody (right histogram) compared to a negative control cell (left histogram). FITC-conjugated goat-anti-rabbit secondary antibodies were used for the analysis.