

Product datasheet for **AP52065PU-N**

JPT1 (Center) Rabbit Polyclonal Antibody

Product data:

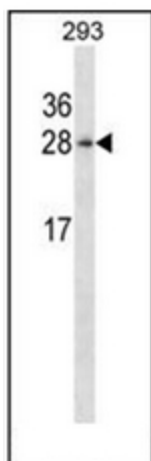
Product Type:	Primary Antibodies
Applications:	FC, IF, WB
Recommended Dilution:	ELISA: 1/1000. Western Blot: 1/100-1/500. Flow Cytometry: 1/10-1/50. Immunofluorescence: 1/10-1/50.
Reactivity:	Human
Host:	Rabbit
Isotype:	Ig
Clonality:	Polyclonal
Immunogen:	Immunized with a KLH conjugated synthetic peptide between 58-86 amino acids from the Central region of human HN1
Specificity:	This antibody recognizes Human HN1 / ARM2 (Center).
Formulation:	PBS containing 0.09% (W/V) Sodium Azide as preservative State: Aff - Purified State: Liquid purified Ig fraction
Concentration:	lot specific
Purification:	Protein A column, followed by peptide affinity purification
Conjugation:	Unconjugated
Storage:	Store undiluted at 2-8°C for one month or (in aliquots) at -20°C for longer. Avoid repeated freezing and thawing.
Stability:	Shelf life: one year from despatch.
Gene Name:	hematological and neurological expressed 1
Database Link:	Entrez Gene 51155 Human Q9UK76
Background:	HN1 belongs to the HN1 family.
Synonyms:	Androgen-regulated protein 2



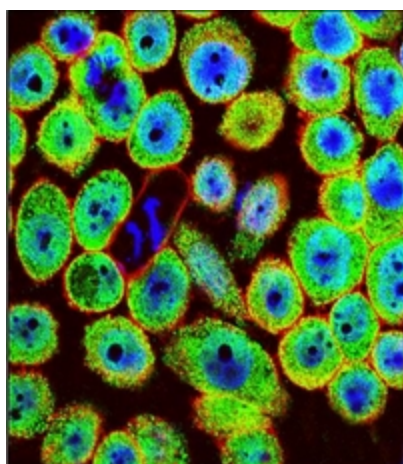
[View online »](#)

Note: **Molecular Weight:** 16015 Da

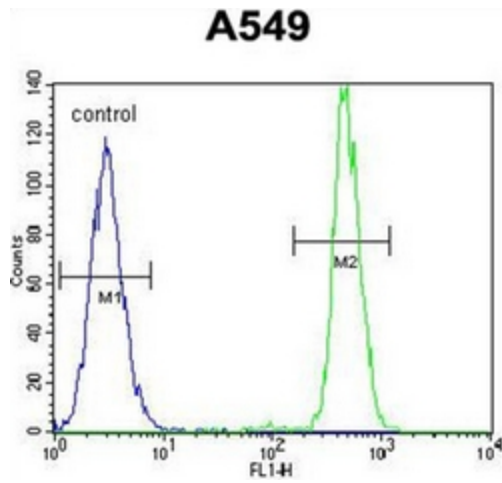
Product images:



Western blot analysis of HN1 / ARM2 Antibody (Center) Cat.-No AP52065PU-N in 293 cell line lysates (35ug/lane). This demonstrates the HN1 antibody detected the HN1 protein (arrow).



Confocal immunofluorescent analysis of HN1 / ARM2 Antibody (Center) Cat.-No AP52065PU-N with A549 cells followed by Alexa Fluor 488-conjugated goat anti-rabbit IgG (green). Actin filaments have been labeled with Alexa Fluor 555 phalloidin (red). DAPI was used to stain the cell nuclei (blue).



Flow cytometric analysis of A549 cells using HN1 / ARM2 Antibody (Center) Cat.-No AP52065PU-N (right histogram) compared to a negative control cell (left histogram). FITC-conjugated goat-anti-rabbit secondary antibodies were used for the analysis.