

Product datasheet for **AP52061PU-N**

HMGCL (Center) Rabbit Polyclonal Antibody

Product data:

Product Type:	Primary Antibodies
Applications:	WB
Recommended Dilution:	ELISA: 1/1000. Western Blot: 1/100-1/500.
Reactivity:	Human
Host:	Rabbit
Isotype:	Ig
Clonality:	Polyclonal
Immunogen:	KLH conjugated synthetic peptide between 160-190 amino acids from the Central region of human HMG-CoA lyase / HMGCL
Specificity:	This antibody recognizes Human HMG-CoA lyase / HMGCL (Center).
Formulation:	PBS containing 0.09% (W/V) Sodium Azide as preservative State: Aff - Purified State: Liquid purified Ig fraction
Concentration:	lot specific
Purification:	Protein A column, followed by peptide affinity purification
Conjugation:	Unconjugated
Storage:	Store undiluted at 2-8°C for one month or (in aliquots) at -20°C for longer. Avoid repeated freezing and thawing.
Stability:	Shelf life: one year from despatch.
Gene Name:	3-hydroxymethyl-3-methylglutaryl-CoA lyase
Database Link:	Entrez Gene 3155 Human P35914
Background:	HMGCL belongs to the HMG-CoA lyase family. It is a mitochondrial enzyme that catalyzes the final step of leucine degradation and plays a key role in ketone body formation. Mutations in this gene are associated with HMG-CoA lyase deficiency. Alternatively spliced transcript variants encoding different isoforms have been found for this gene. [provided by RefSeq].
Synonyms:	HL; hydroxymethylglutaricaciduria



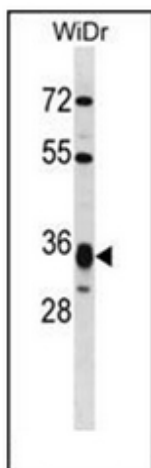
[View online »](#)

Note: **Molecular Weight:** 34360 Da

Protein Families: Druggable Genome

Protein Pathways: Butanoate metabolism, Metabolic pathways, Synthesis and degradation of ketone bodies, Valine, leucine and isoleucine degradation

Product images:



Western blot analysis of HMG-CoA lyase / HMGCL Antibody (Center) in WiDr cell line lysates (35ug/lane). This demonstrates the HMGCL antibody detected the HMGCL protein (arrow).