

Product datasheet for **AP52058PU-N**

HMG1L10 (HMGB1P10) (N-term) Rabbit Polyclonal Antibody

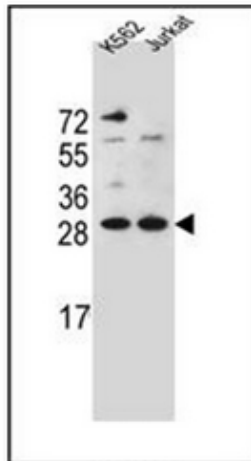
Product data:

Product Type:	Primary Antibodies
Applications:	FC, WB
Recommended Dilution:	ELISA: 1/1000. Western Blot: 1/100-1/500. Flow Cytometry: 1/10-1/50.
Reactivity:	Human
Host:	Rabbit
Isotype:	Ig
Clonality:	Polyclonal
Immunogen:	KLH conjugated synthetic peptide between 16-44 amino acids from the N-terminal region of human HMG1L10
Specificity:	This antibody recognizes Human HMG1L10 (N-term).
Formulation:	PBS containing 0.09% (W/V) Sodium Azide as preservative State: Aff - Purified State: Liquid purified Ig fraction
Concentration:	lot specific
Purification:	Protein A column, followed by peptide affinity purification
Conjugation:	Unconjugated
Storage:	Store undiluted at 2-8°C for one month or (in aliquots) at -20°C for longer. Avoid repeated freezing and thawing.
Stability:	Shelf life: one year from despatch.
Gene Name:	high mobility group box 1 pseudogene 10
Database Link:	Q9UGV6
Background:	HMGB1L10 binds preferentially single-stranded DNA and unwinds double stranded DNA (By similarity).
Synonyms:	High mobility group protein 1-like 10, HMG-1L10
Note:	Molecular Weight: 24218 Da

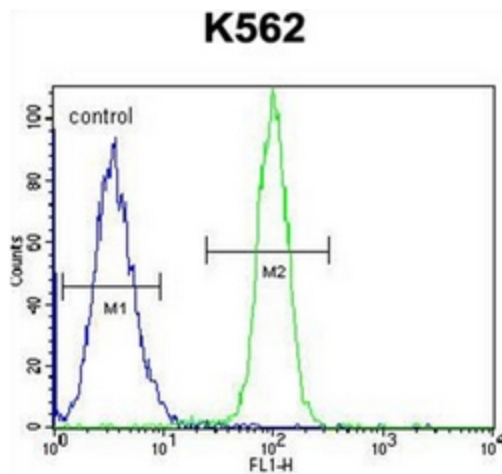


[View online »](#)

Product images:



Western blot analysis of HMG1L10 Antibody (N-term) in K562, Jurkat cell line lysates (35ug/lane). This demonstrates the HMG1L10 antibody detected the HMG1L10 protein (arrow).



Flow cytometric analysis of K562 cells using HMG1L10 Antibody (N-term) (right histogram) compared to a negative control cell (left histogram). FITC-conjugated goat-anti-rabbit secondary antibodies were used for the analysis.