

Product datasheet for **AP52057PU-N**

MFGE8 (C-term) Rabbit Polyclonal Antibody

Product data:

Product Type:	Primary Antibodies
Applications:	FC, WB
Recommended Dilution:	Western Blot: 1/1000. Flow Cytometry: 1/10-1/50.
Reactivity:	Human
Host:	Rabbit
Isotype:	Ig
Clonality:	Polyclonal
Immunogen:	KLH conjugated synthetic peptide between 315-345 amino acids from the C-terminal region of Human Lactadherin
Specificity:	This antibody recognizes Human Lactadherin (C-term).
Formulation:	PBS containing 0.09% (W/V) Sodium Azide as preservative State: Aff - Purified State: Liquid purified Ig fraction
Concentration:	lot specific
Purification:	Protein A column, followed by peptide affinity purification
Conjugation:	Unconjugated
Storage:	Store undiluted at 2-8°C for one month or (in aliquots) at -20°C for longer. Avoid repeated freezing and thawing.
Stability:	Shelf life: one year from despatch.
Gene Name:	milk fat globule-EGF factor 8 protein
Database Link:	Entrez Gene 4240 Human Q08431



[View online »](#)

Background:

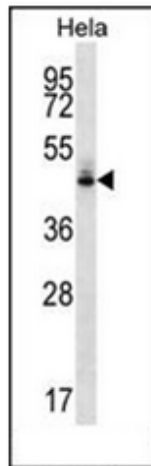
HMFG plays an important role in the maintenance of intestinal epithelial homeostasis and the promotion of mucosal healing. Promotes VEGF-dependent neovascularization (By similarity). Contributes to phagocytic removal of apoptotic cells in many tissues. Specific ligand for the alpha-v/beta-3 and alpha-v/beta-5 receptors. Also binds to phosphatidylserine-enriched cell surfaces in a receptor-independent manner. Zona pellucida-binding protein which may play a role in gamete interaction. Binds specifically to rotavirus and inhibits its replication. Medin is the main constituent of aortic medial amyloid.

Synonyms:

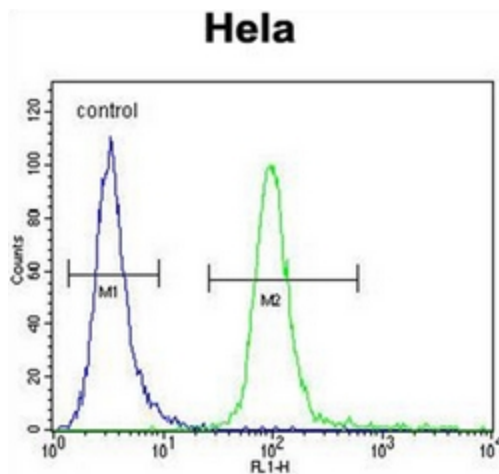
MFGE8, Milk fat globule-EGF factor 8, HMFG, Breast epithelial antigen BA46, MFGM

Note:

Molecular Weight: 43123 Da

Product images:


Western blot analysis of Lactadherin Antibody (C-term) in HeLa cell line lysates (35ug/lane).



Flow cytometric analysis of HeLa cells using Lactadherin Antibody (C-term) (right histogram) compared to a negative control cell (left histogram). FITC-conjugated goat-anti-rabbit secondary antibodies were used for the analysis.