

Product datasheet for **AP52052PU-N**

HLA DMB (HLA-DMB) (Center) Rabbit Polyclonal Antibody

Product data:

Product Type:	Primary Antibodies
Applications:	WB
Recommended Dilution:	ELISA: 1/1000. Western Blot: 1/100-1/500.
Reactivity:	Human
Host:	Rabbit
Isotype:	Ig
Clonality:	Polyclonal
Immunogen:	KLH conjugated synthetic peptide between 103-133 amino acids from the Central region of human HLA class II DM beta / HLA-DMB
Specificity:	This antibody recognizes Human HLA class II DM beta / HLA-DMB (Center).
Formulation:	PBS containing 0.09% (W/V) Sodium Azide as preservative State: Aff - Purified State: Liquid purified Ig fraction
Concentration:	lot specific
Purification:	Protein A column, followed by peptide affinity purification
Conjugation:	Unconjugated
Storage:	Store undiluted at 2-8°C for one month or (in aliquots) at -20°C for longer. Avoid repeated freezing and thawing.
Stability:	Shelf life: one year from despatch.
Gene Name:	major histocompatibility complex, class II, DM beta
Database Link:	Entrez Gene 3109 Human P28068



[View online »](#)

Background:

HLA-DMB belongs to the HLA class II beta chain paralogues. This class II molecule is a heterodimer consisting of an alpha (DMA) and a beta (DMB) chain, both anchored in the membrane. It is located in intracellular vesicles. DM plays a central role in the peptide loading of MHC class II molecules by helping to release the CLIP (class II-associated invariant chain peptide) molecule from the peptide binding site. Class II molecules are expressed in antigen presenting cells (APC: B lymphocytes, dendritic cells, macrophages). The beta chain is approximately 26-28 kDa and its gene contains 6 exons. Exon one encodes the leader peptide, exons 2 and 3 encode the two extracellular domains, exon 4 encodes the transmembrane domain and exon 5 encodes the cytoplasmic tail.

Synonyms:

DMB, RING7, MHC class II antigen DMB

Note:

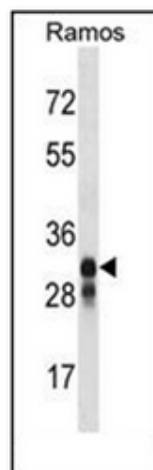
Molecular Weight: 28943 Da

Protein Families:

Transmembrane

Protein Pathways:

Allograft rejection, Antigen processing and presentation, Asthma, Autoimmune thyroid disease, Cell adhesion molecules (CAMs), Graft-versus-host disease, Systemic lupus erythematosus, Type I diabetes mellitus, Viral myocarditis

Product images:

Western blot analysis of HLA-DMB Antibody (Center) in Ramos cell line lysates (35ug/lane). This demonstrates the HLA-DMB antibody detected the HLA-DMB protein (arrow).