

Product datasheet for **AP52049PU-N**

HIPK1 (C-term) Rabbit Polyclonal Antibody

Product data:

Product Type:	Primary Antibodies
Applications:	IHC, WB
Recommended Dilution:	ELISA: 1/1000. Western Blot: 1/100-1/500. Immunohistochemistry on Paraffin Sections: 1/10-1/50.
Reactivity:	Human
Host:	Rabbit
Isotype:	Ig
Clonality:	Polyclonal
Immunogen:	KLH conjugated synthetic peptide between 892-922 amino acids from the C-terminal region of human HIPK1
Specificity:	This antibody recognizes Human HIPK1 (C-term).
Formulation:	PBS containing 0.09% (W/V) Sodium Azide as preservative State: Aff - Purified State: Liquid purified Ig fraction
Concentration:	lot specific
Purification:	Protein A column, followed by peptide affinity purification
Conjugation:	Unconjugated
Storage:	Store undiluted at 2-8°C for one month or (in aliquots) at -20°C for longer. Avoid repeated freezing and thawing.
Stability:	Shelf life: one year from despatch.
Gene Name:	homeodomain interacting protein kinase 1
Database Link:	Entrez Gene 204851 Human Q86Z02
Background:	The protein encoded by this gene belongs to the Ser/Thr family of protein kinases and HIPK subfamily. It phosphorylates homeodomain transcription factors and may also function as a co-repressor for homeodomain transcription factors. Alternative splicing results in four transcript variants encoding four distinct isoforms.



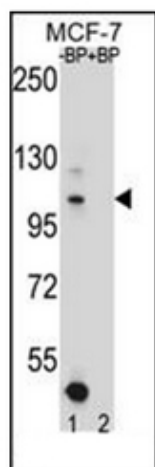
[View online »](#)

Synonyms: KIAA0630

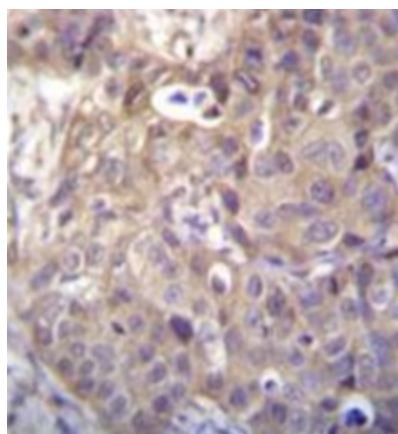
Note: **Molecular Weight:** 130843 Da

Protein Families: Druggable Genome, Protein Kinase, Transcription Factors

Product images:



Western blot analysis of HIPK1 Antibody (C-term) pre-incubated without (lane 1) and with (lane 2) blocking peptide in MCF-7 cell line lysate. HIPK1 Antibody (C-term) (arrow) was detected using the purified Pab (1:60/250 dilution).



Immunohistochemistry analysis in formalin fixed and paraffin embedded human breast carcinoma recated with HIPK1 Antibody (C-term) followed by peroxidase conjugation of the secondary antibody and DAB staining.