

Product datasheet for **AP52048PU-N**

HIP1R (N-term) Rabbit Polyclonal Antibody

Product data:

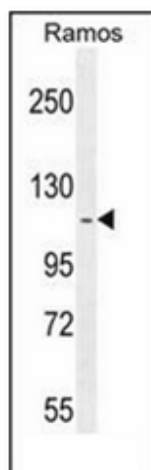
Product Type:	Primary Antibodies
Applications:	FC, IHC, WB
Recommended Dilution:	ELISA: 1/1000. Western Blot: 1/100-1/500. Flow Cytometry: 1/10-1/50 Immunohistochemistry on Paraffin Sections: 1/10-1/50.
Reactivity:	Human
Host:	Rabbit
Isotype:	Ig
Clonality:	Polyclonal
Immunogen:	KLH conjugated synthetic peptide between 105-133 amino acids from the N-terminal region of Human HIP12 / HIP1R
Specificity:	This antibody recognizes Human HIP12 / HIP1R (N-term).
Formulation:	PBS containing 0.09% (W/V) Sodium Azide as preservative State: Aff - Purified State: Liquid purified Ig fraction
Concentration:	lot specific
Purification:	Protein A column, followed by peptide affinity purification
Conjugation:	Unconjugated
Storage:	Store undiluted at 2-8°C for one month or (in aliquots) at -20°C for longer. Avoid repeated freezing and thawing.
Stability:	Shelf life: one year from despatch.
Gene Name:	huntingtin interacting protein 1 related
Database Link:	Entrez Gene 9026 Human O75146
Background:	This protein is a "fusion" protein encoding four enzymatic activities of the pyrimidine pathway (GATase, CPSase, ATCase and DHOase.
Synonyms:	KIAA0655, Huntingtin-interacting protein 12, HIP1-related protein



[View online »](#)

Note: **Molecular Weight:** 119388 Da

Product images:



Western blot analysis of HIP12 / HIP1R Antibody (N-term) in Ramos cell line lysates (35ug/lane). This demonstrates the HIP1R antibody detected the HIP1R protein (arrow).