

Product datasheet for **AP52042PU-N**

HHLA2 (N-term) Rabbit Polyclonal Antibody

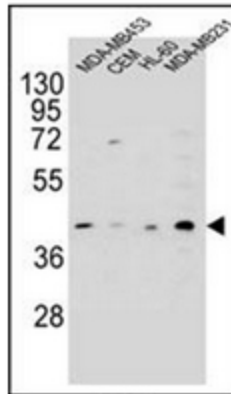
Product data:

Product Type:	Primary Antibodies
Applications:	FC, IHC, WB
Recommended Dilution:	Western Blot: 1/1000. Flow Cytometry: 1/10-1/50. Immunohistochemistry on Paraffin Sections: 1/50-1/100.
Reactivity:	Human
Host:	Rabbit
Isotype:	Ig
Clonality:	Polyclonal
Immunogen:	KLH conjugated synthetic peptide between 58-87 amino acids from the N-terminal region of Human HHLA2
Specificity:	This antibody recognizes Human HHLA2 (N-term).
Formulation:	PBS containing 0.09% (W/V) Sodium Azide as preservative State: Aff - Purified State: Liquid purified Ig fraction
Concentration:	lot specific
Purification:	Protein A column, followed by peptide affinity purification
Conjugation:	Unconjugated
Storage:	Store undiluted at 2-8°C for one month or (in aliquots) at -20°C for longer. Avoid repeated freezing and thawing.
Stability:	Shelf life: one year from despatch.
Gene Name:	HERV-H LTR-associating 2
Database Link:	Entrez Gene 11148 Human Q9UM44
Synonyms:	HERV-H LTR-associating protein 2
Note:	Molecular Weight: 46850 Da
Protein Families:	Transmembrane

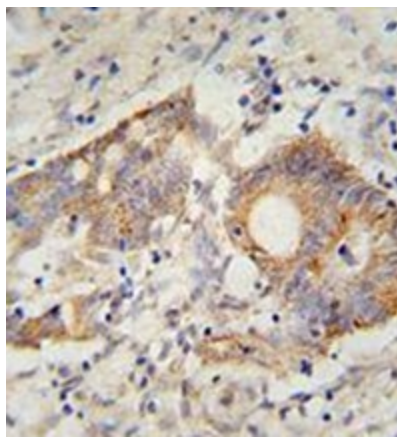


[View online »](#)

Product images:

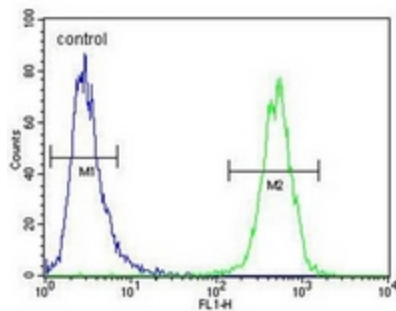


Western blot analysis of HHLA2 Antibody (N-term) in MDA-MB453, CEM, HL-60, MDA-MB231 cell line lysates (35ug/lane). This demonstrates the HHLA2 antibody detected the HHLA2 protein (arrow).



Immunohistochemistry analysis in formalin fixed and paraffin embedded human colon carcinoma reacted with, which was peroxidase conjugated to the secondary antibody and followed by DAB staining.

MDA-MB231



Flow cytometric analysis of MDA-MB231 cells using (right histogram) compared to a negative control cell (left histogram). FITC-conjugated goat-anti-rabbit secondary antibodies were used for the analysis.