

## Product datasheet for **AP52039PU-N**

### **KAT2A (C-term) Rabbit Polyclonal Antibody**

#### **Product data:**

Product Type:	Primary Antibodies
Applications:	FC, WB
Recommended Dilution:	<b>ELISA:</b> 1/1000. <b>Western Blot:</b> 1/100-1/500. <b>Flow Cytometry:</b> 1/10-1/50.
Reactivity:	Human, Mouse
Host:	Rabbit
Isotype:	Ig
Clonality:	Polyclonal
Immunogen:	KLH conjugated synthetic peptide between 806-837 amino acids from the C-terminal region of Human KAT2A / GCN5L2
Specificity:	This antibody recognizes Human and Mouse KAT2A / GCN5L2 (C-term).
Formulation:	PBS containing 0.09% (W/V) Sodium Azide as preservative State: Purified State: Liquid purified Ig fraction
Concentration:	lot specific
Purification:	Saturated Ammonium Sulfate (SAS) precipitation followed by dialysis against PBS
Conjugation:	Unconjugated
Storage:	Store undiluted at 2-8°C for one month or (in aliquots) at -20°C for longer. Avoid repeated freezing and thawing.
Stability:	Shelf life: one year from despatch.
Gene Name:	lysine acetyltransferase 2A
Database Link:	<a href="#">Entrez Gene 14534 Mouse</a> <a href="#">Entrez Gene 2648 Human</a> <a href="#">Q92830</a>
Background:	KAT2A, or GCN5, is a histone acetyltransferase (HAT) that functions primarily as a transcriptional activator. It also functions as a repressor of NF-kappa-B (see MIM 164011) by promoting ubiquitination of the NF-kappa-B subunit RELA (MIM 164014) in a HAT-independent manner (Mao et al., 2009 [PubMed 19339690]).



[View online »](#)

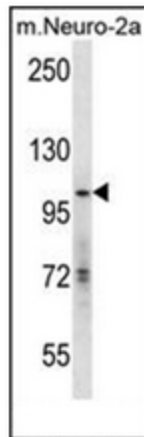
**Synonyms:** Histone acetyltransferase KAT2A, Histone acetyltransferase GCN5, HsGCN5, HGCN5, Lysine acetyltransferase 2A, STAF97

**Note:** **Molecular Weight:** 93926 Da

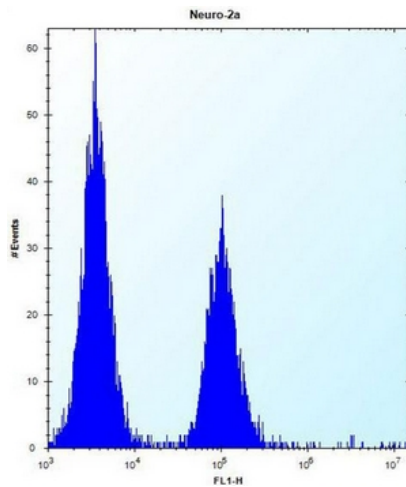
**Protein Families:** Transcription Factors

**Protein Pathways:** Notch signaling pathway

**Product images:**



Western blot analysis of KAT2A / GCN5L2 Antibody (C-term) in mouse Neuro-2a cell line lysates (35ug/lane).



Flow cytometric analysis of Neuro-2a cells using KAT2A / GCN5L2 Antibody (C-term) (right histogram) compared to a negative control cell (left histogram). FITC-conjugated donkey-anti-rabbit secondary antibodies were used for the analysis.