

Product datasheet for **AP52037PU-N**

Repulsive Guidance Molecule C (HFE2) (C-term) Rabbit Polyclonal Antibody

Product data:

Product Type:	Primary Antibodies
Applications:	FC, WB
Recommended Dilution:	ELISA: 1/1000. Western Blot: 1/100-1/500. Flow Cytometry: 1/10-1/50.
Reactivity:	Human
Host:	Rabbit
Isotype:	Ig
Clonality:	Polyclonal
Immunogen:	This HFE2 antibody is generated from rabbits immunized with a KLH conjugated synthetic peptide between 308-338 amino acids from the C-terminal region of human HFE2.
Specificity:	This antibody recognizes Human HFE2 / Hemojuvelin (C-term).
Formulation:	PBS containing 0.09% (W/V) Sodium Azide as preservative State: Aff - Purified State: Liquid purified Ig fraction
Concentration:	lot specific
Purification:	Protein A column, followed by peptide affinity purification
Conjugation:	Unconjugated
Storage:	Store undiluted at 2-8°C for one month or (in aliquots) at -20°C for longer. Avoid repeated freezing and thawing.
Stability:	Shelf life: one year from despatch.
Gene Name:	hemochromatosis type 2 (juvenile)
Database Link:	Entrez Gene 148738 Human Q6ZVN8



[View online »](#)

Background:

HFE2 is involved in iron metabolism. It may be a component of the signaling pathway which activates hepcidin or it may act as a modulator of hepcidin expression. It could also represent the cellular receptor for hepcidin. Alternatively spliced transcript variants encoding different isoforms have been identified for this gene. Defects in this gene are the cause of hemochromatosis type 2A, also called juvenile hemochromatosis (JH). JH is an early-onset autosomal recessive disorder due to severe iron overload resulting in hypogonadotropic hypogonadism, hepatic fibrosis or cirrhosis and cardiomyopathy, occurring typically before age of 30.

Synonyms:

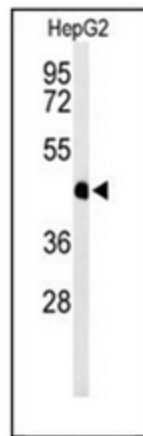
HJV, RGMC

Note:

Molecular Weight: 45.08 kDa

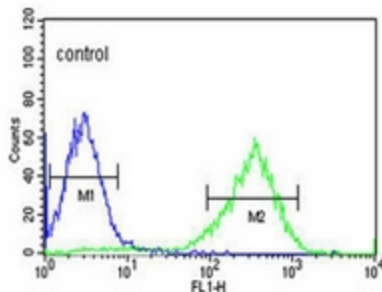
Protein Families:

Transmembrane

Product images:


Western blot analysis of HFE2 / Hemojuvelin Antibody (C-term) in HepG2 cell line lysates (35ug/lane). HFE2 (arrow) was detected using the purified Pab.

HepG2



Flow cytometric analysis of HepG2 cells using HFE2 / Hemojuvelin Antibody (C-term) (right histogram) compared to a negative control cell (left histogram). FITC-conjugated goat-anti-rabbit secondary antibodies were used for the analysis.